

FREE

ISSUE 127

just

# BEVERLEY

IT'S YOUR MAGAZINE

Est.  
1866

BEVERLEY  
BUILDING SOCIETY

Building Better Futures

**BEVERLEY BUILDING SOCIETY**  
**BUILDING BETTER FUTURES TOGETHER**

NEWS, WHAT'S ON, LIFESTYLE, FEATURES, PUZZLES, PHOTOS & MORE

# Your Partners in Payroll

Are you worried about getting your payroll right? It's time for change.  
Outsource your payroll today and be rest assured everything is taken care of!



## LYNNE AUTON TAX MANAGER

Lynne started at Finnies over 25 years ago  
and had a short break to work at  
a large plc in Hull.

Outside of work, Lynne enjoys  
competing in Olympic Weightlifting  
(current British Masters Champion)  
and supporting her son, watching  
him as a goalkeeper.



### Payroll Outsourcing Benefits

- ✓ Cost reduction
- ✓ Better staff productivity
- ✓ High accuracy & reliability
- ✓ e-payslips direct to employees via our app
- ✓ A named personal contact
- ✓ Added value services including HR & Benefits in Kind
- ✓ Useful online information

to arrange a **FREE** meeting  
call us on: 0845 308 2288  
or visit  
[www.stipendia.org.uk](http://www.stipendia.org.uk)



Stipendia Payroll Solutions



@StipendiaPay

## 6/7 BEVERLEY BUILDING SOCIETY



## 4 INTRODUCING ED THOMPSON



## 5 LEGO EXHIBITION



## 9 PARKWAY CINEMA



## 21 ARMED FORCES DAY



## 24/25 WALKING FESTIVAL



## 39 PLAYLAB AT ERT



### Contributors:

Julian Minshall, Olivia Peace, Rich Manville, Louise Barrett, Andrew Cooper, Julie Dowding, Sam Drinkall, Fran Dunning, ert, Josh Harrison, Gary Hornsby, Amanda McConnell, Navigation Wealth Management, Jayne Morgan, Phil Pond, Colin Raynor, Ian Richardson, Ed Thompson, Nathan Wilson.

**REMEMBER!** If you see examples of anti-social behaviour or other types of low-level crime, do report it to the appropriate authorities. **POLICE - Emergency 999, Non-urgent 101.**

**ANTI-SOCIAL BEHAVIOUR** (East Riding of Yorkshire Council) - **01482 393939.**

The magazine is available from outlets in Beverley and surrounding areas.

**Disclaimer - All the information provided was correct at the time of going to print.**

ISSN 2754-9216



Please pass your Just Beverley on or recycle it responsibly.  
Printed by: Jadan Press.

[www.justbeverley.co.uk](http://www.justbeverley.co.uk)



## AUGUST LETTER FROM THE EDITORS



At last August is here, everyone is in holiday mode, and having enjoyed the success of the Lionesses we hope that the Women's England Rugby Team "The Red Roses", will continue driving forward in the World Cup.

This August, take the time to get out and about and enjoy events and activities in and around Beverley - including seeing the Challenge Cup in Walkington. We also welcome a new contributor Ed Thompson, giving you food for thought!!

As always, if you are in the sun, make sure you are well protected with suncream, shirt, hat and sunglasses. Get behind our Women's Rugby Teams, have a fantastic August, stay safe, send in your photos and stories.

**Julian.**



August is here, the sun is shining and we hope that the Women's Rugby Team is as successful as the Lionesses and we win the World Cup on our home turf at Twickenham. Group matches can be watched in York, Sunderland, Northampton and Manchester, so try and get behind the Red Roses if you can.

At this time of the year I love the fresh air, I like to sit in the park and just let the world go past, people and families are amazing to listen to, all the fun and laughter echoing around, putting a smile on everyone's faces.

Enjoy the articles we have for you to read, this August try to get the most from relaxing and enjoying the outdoors. Whether you are having a holiday, exploring the countryside or relaxing at home, have a great August.

**Olivia.**



**O2** 'Community Publication Award'  
Shortlisted Nominee  
2017 & 2018



**REYTA**  
'Award Nominee 2016  
'Best Newcomer'

## GET IN TOUCH WITH US:

**Website:** [justbeverley.co.uk](http://justbeverley.co.uk)

**Email:** [info@justbeverley.co.uk](mailto:info@justbeverley.co.uk)

**Telephone:** 01482 679947

**Facebook:** [facebook.com/justbeverley](https://facebook.com/justbeverley)

If you would like copies for your business to distribute to staff and customers, call Just Beverley on **01482 679947.**



# BEVERLEY BUILDING SOCIETY'S 'EAST RIDING 360' BIKE CHALLENGE RAISES £2,000 FOR HULL AND EAST YORKSHIRE MIND!

*It's become a Summer tradition at the East Riding's only traditional, award-winning mutual: Beverley Building Society's Charity Bike Challenge, which takes place outside of its branch in the town's Saturday Market.*

This Summer the fundraiser took place from Monday 30th June to Saturday 5th July and once again the Society brought out its trusty exercise bike for another relay-style cycling marathon, in aid of its Charity of the Year for 2025, Hull and East Yorkshire Mind. The Charity has been supporting mental health and wellbeing in our communities since 1976.

In previous years the Beverley has been overwhelmed by the incredible generosity of its supporters and this year has been no different: people crowded around the bike to chat to the team and kept the buckets jingling to give whatever they could. With the cycling continuing an extra day into the Saturday morning by an enthusiastic staff member, the result smashed target with a whopping 422 miles and a phenomenal £898 raised through cash and Just Giving contributions.



In the true spirit of support though, Beverley Building Society didn't stop there: the firm match-funds its charitable promotions but this time it rounded up the figure to make a total donation of £2,000 to help life-changing mental health support!

Hull and East Yorkshire Mind's Group Marketing and Communications Manager, Jack Moore said: "We are incredibly grateful to Beverley Building Society, their staff, and everyone who supported the East Riding 360 Bike Challenge. This phenomenal effort - cycling over 420 miles and raising £2,000 - will help the charity continue providing vital mental health services to people across the region."

"The funds raised will support counselling, crisis intervention, housing support, group sessions, and much more - ensuring that no one has to face a mental health problem alone. We would like to sincerely thank everyone involved for their dedication, generosity, and for showing such strong support for local mental health and wellbeing."

Team BBS didn't deliver its Bike Challenge alone either. This year the organisation would like to say a huge thank you to some spectacular guest cyclists! Once again Just Beverley's Editor, Julian Minshall, was the first to jump into the saddle for a top speed stint, followed by HEY Mind's very own Anthony Snow who was clearly a sucker for punishment and came back twice. And last but definitely not least were half a dozen determined volunteer cyclists from the Society's wonderful community partner, Beverley RUFC, who snapped up the remaining free slots within just hours of being invited!

Named the 'East Riding 360', the 360-mile target represented the equivalent distance of cycling twice round the heartland of both organisations via key towns. And a Challenge it certainly was because, whilst there was a spell of rain mid-week, temperatures touched 30 degrees at times for the Beverley's biggest single annual fundraiser. The Society would like to express its heartfelt thanks for the vital funding you have helped to deliver. Last year alone, Hull and East Yorkshire Mind supported over 25,000 people with their mental health. They do this through counselling, group support, housing and more. For example, counselling services are available for those experiencing anxiety, depression, bereavement, work-related stress, or other emotions impacting daily life. Reaching out for help can feel difficult, but it's important to remember that asking for support is a vital step toward improving your wellbeing.

Counselling provides a safe and confidential space to talk about the challenges people face. It can help to explore thoughts and feelings for those who are struggling to achieve personal goals. Many people find that counselling builds self-confidence, improves self-esteem, and provides the tools needed to face the future with hope and resilience. Hull and East Yorkshire Mind supports people in their mental health crisis every step of the way.

Beverley Building Society Marketing Manager, Debbie Connolly concluded: "I'm overwhelmed by the exceptional support we've had from our cyclists and everyone who has donated, it's humbling to see what can be achieved when we pull together. Mental health may not be a physical condition, but that doesn't mean it isn't just as critical, and we shouldn't forget that. We need to keep the conversation and the fundraising going to keep it in the forefront of peoples' minds - and we're determined to do that, so watch this space!"

Beverley Building Society's Charity of the Year 2025 Campaign in aid of Hull and East Yorkshire Mind continues until the end of December so if you'd still like to donate please visit: [www.justgiving.com/page/bbs4heymin](http://www.justgiving.com/page/bbs4heymin) and keep an eye on its social media to see what else is planned. For more information on Beverley Building Society's products and services you can also visit: <https://beverleybs.co.uk/>

## INTRODUCING ED THOMPSON

**My name is Ed Thompson, and I'm thrilled to share with you that I will be a new and regular contributor to Just Beverley!**

I have been a local personal trainer, wellness and performance coach, based at Total Fitness since 2019 and have dealt with a broad range of clients from ages 15 to 80+ all with a myriad of different goals such as weight loss, muscle gain, strength advancement, mobility improvement, nutritional planning, hip replacement rehabilitation, knee replacement rehabilitation and occasionally athletic performance for specific sports.

Alongside my operational work with clients, I keep a close eye on the wellness industry as a whole and attend several events, experiences and workshops to ensure I am always ahead of

the curve and provide my clients with the best coaching available.

I hope to use my experience and knowledge to give practical and applicable guidance to help you improve your wellbeing especially in areas such as improving sleep, recovery and some other more nuanced areas that will all help you to live with more wellness, for longer.

Outside of my professional life, I am a proud father and love coffee, great food and spending my time around people. I'm deeply passionate about helping to solve people's challenges around their health and broader wellness and I hope that I



can provide you with valuable insights which can elevate your quality of life and enable you to live better, for longer. My first educational article will be featured in September, have a great August.

I'm here for any questions:  
[edjthompsonpt@gmail.com](mailto:edjthompsonpt@gmail.com)

# BRICK HISTORY EXHIBITION AT BEVERLEY ART GALLERY ON UNTIL SATURDAY, 30TH AUGUST

**Beverley Art Gallery's exhibition, *Brick History*, is a captivating journey through 13.8 billion years of world history, creatively brought to life using LEGO® bricks.**

Created by LEGO® artist Warren Elsmore and his talented team, this innovative exhibition transforms key moments in history into vibrant, engaging models that appeal to visitors of all ages.

East Riding of Yorkshire Council's Beverley Art Gallery, located in the Champney Treasure House, Beverley, will host this free exhibition until Saturday, 30th August.

Brick History offers a relatable, human perspective on world events, featuring iconic figures from Mozart to Martin Luther King, groundbreaking scientific discoveries from the Big Bang to DNA, and milestones from the moon landings to the advent of mobile phones.

Starting with the origins of the universe, the exhibition swiftly moves through prehistory, the rise of civilization, the Renaissance, the age of empires, revolutionary social changes, and



advances in science and technology. Visitors will see history unfold through meticulously crafted LEGO® models depicting pivotal moments, from the birth of modern politics to humanity's journey into space.

Beverley Art Gallery Curator Hannah Willetts said: "We are so excited to share this exhibition with families and LEGO enthusiasts this Summer. A journey through history brought to life in LEGO® bricks, set within the historic Beverley Art Gallery, which has been welcoming visitors since 1910."

Councillor Nick Coultish, cabinet member for culture, leisure and tourism at East Riding of Yorkshire Council said: "The Brick History exhibition at Beverley Art Gallery will be sure to entertain all visitors this summer. We are excited to host this creative exhibition which explores world history in such a unique and creative way and look



forward to welcoming people to the upcoming family-friendly events."

For more information visit: [www.eastridingmuseums.co.uk/whats-on/](http://www.eastridingmuseums.co.uk/whats-on/) **Beverley Art Gallery, First Floor of Champney Treasure House, Champney Rd, Beverley, HU17 8HE.**



## RETAIL THEATRE - SHOPS THAT ENTERTAIN

**Picture the average high-street store today: neat racks, tidy shelves, a silent promise that "everything you see is for sale." Functional? Sure. Memorable? Hardly.**

Shoppers can scroll through the same flat catalogue online, from the comfort of their sofa - so why battle traffic just to meet a physical version of a website? That's the heart of the problem. Generally, physical retail still behaves like a



warehouse... with nicer lighting; while pure-play e-commerce brands are busy weaving friction-free journeys, data-driven nudges, and immersive content into every click.

Even if rent rises, high business rates and payroll headaches were erased tomorrow, four walls covered by static products would remain. The needle on footfall wouldn't budge much... if at all.

What's needed is "Retail Theatre." Think of your store as a live set and your merchandise as the cast, props and story. Your role as the Producer and Director? To stage an experience that can't be screen-shot. Swap the mannequin parade for touch-to-test zones, maker labs, micro-events and behind-the-scenes demos.

Let baristas teach latte art beside the espresso machines you sell; invite sneaker customisers to remix your latest drop; hand guests a gamified quest that unlocks limited-run pieces tucked round each corner.

Now zoom out to the shopfront. A window is no longer a glass barrier - it's your movie poster. It should stop passers-by mid-stride, whispering, "Plot twist inside!" Use kinetic displays, AR

portals, street-level leaderboards - anything that sparks curiosity before a single step crosses the threshold. The Game-Changer here is 'conversation'. Give visitors a story worth retelling and they'll broadcast it faster than any media budget can.

Word-of-mouth carries exponential reach: one dazzled customer shares with three friends, those friends with nine more, and suddenly you've built gravity that pulls people in before they even realise why.

Solve the experience gap and sales will follow naturally. Build the show, let your audience co-star, and watch the high street morph from

transactional corridor into cultural playground. That's the 'Future' consumers are waiting for.



**FORESIGHT  
+ TRENDS**

**Phil Pond - Client Business Strategist**  
**Scarlet Opus Limited**  
[www.scarletopus.com](http://www.scarletopus.com)

# HELPING FAMILIES AND FIRST-TIME BUYERS - THE BEVERLEY WAY

*Getting on the property ladder is tough - especially for first-time buyers. At Beverley Building Society, we're doing things differently, with innovative mortgage options that help families support each other.*

## **No Deposit? No Problem**

Our **Family Assist 100% Mortgage** lets first-time buyers purchase a home without a deposit. Instead, we take a 20% legal charge over a parent's property - so families can help without handing over cash.

## **Boosting Borrowing Power**

With our **Joint Borrower Sole Proprietor** mortgage, parents can join the mortgage to increase affordability, without being on the title deeds. It keeps ownership with the buyer while allowing families to work together.

## **Living Together, Buying Together**

Our **Multi-Generation Mortgages** support families who want to buy and live together. We consider everyone's income, making shared ownership more accessible. And if you're looking for independence under one roof, our policy supports **annexed living** - ideal for granny flats or grown-up children, so long as it's all under one title.

## **Why Beverley?**

As a small building society, we're not bound by rigid systems. We personally underwrite every case, using common sense and care. It's about real people making real decisions.

So, whether you're a first-time buyer or a family looking to support each other, talk to your broker or contact us directly. We're here to help make home ownership possible - together.



**Tel: 01482 881510**

**Email: [mortgages@beverleybs.co.uk](mailto:mortgages@beverleybs.co.uk)**

**Web: [beverleybs.co.uk/mortgages](http://beverleybs.co.uk/mortgages)**

**Your home may be repossessed if you do not keep up repayments on your mortgage.**





*Fed up of rejection from not  
ticking the box?*

## Discover flexible mortgage solutions with Beverley Building Society

Tel: 01482 881510 Email: [mortgages@beverleybs.co.uk](mailto:mortgages@beverleybs.co.uk)



Best Local Building Society



Protected

[www.beverleybs.co.uk](http://www.beverleybs.co.uk)



Authorised by the Prudential Regulation Authority and regulated  
by the Financial Conduct Authority and the Prudential Regulation  
Authority. Registered Number 206064.



**BEVERLEY**  
BUILDING SOCIETY

Building Better Futures

# BEVERLEY TOWN COUNCIL TO HOLD COMMUNITY CONCERT TO MARK 80TH ANNIVERSARY OF VJ DAY

**Beverley Town Council is proud to announce a community concert to commemorate the 80th anniversary of VJ Day (Victory over Japan Day), taking place On Friday 15th August at 7pm at St Mary's Church.**

This event will honour the end of World War II and those who served in the Far East, including many who never returned home, whilst also encompassing community unity. The concert will feature performances from Beverley Church Lads and Girls Brigade, Beverley Male Voice Choir, and will include readings of wartime memories and moments of reflection.

Councillor Alison Healy, Mayor of Beverley, said: "This is a deeply important milestone for our country. VJ Day marked the end of a devastating



global conflict, and this concert is a way for us to come together as a community to honour those who served, those who suffered, and those who made the ultimate sacrifice."

"On behalf of Beverley Town Council, I warmly invite residents to be part of this commemoration - whether by attending the concert or by sharing family stories that connect us to this important history. Our collective memories are part of Beverley's story."

Andrew Park, Chair of Beverley Male Voice Choir, said, "Everyone at Beverley Male Voice Choir is delighted to have this opportunity to support Beverley Town Council's commemorations of the 80th anniversary of VJ Day. We are keen to show our support for this important memorial event to mark the day on which World War II finally ended, and to honour and recognise the sacrifice of those who served."

Musical Director of Beverley Male Voice Choir, Liz Wilson, said "After a busy Summer of concerts to celebrate our own 70th anniversary this year, we are thrilled to be returning to St Mary's to perform a programme of poignant and stirring pieces at Beverley Town Council's event on 15th August. Our members are working very hard to perfect our repertoire and look forward to delighting all those who attend. The acoustics in the venue are superb, and will showcase the amazing sound that we make!"

The Town Council is inviting residents to submit personal or family stories related to VJ Day or



experiences of the war in the Far East. Selected stories will be read during the concert, and others will be shared on the Town Council website.

VJ Day, on 15 August 1945, marked the official end of the Second World War, when Japan surrendered to the Allied Forces. For the UK, it followed the earlier surrender of Germany (VE Day in May), and signified final victory after six years of global conflict. It is a day of solemn remembrance, particularly for those who fought in the Far East and those held as prisoners of war. The concert will be free to attend, and any donations on the evening will be gratefully received in support of Beverley Church Lads and Girls Brigade (the Mayor's Charity of the Year) and St Mary's Church.

Councillor Healy added: "This will be an upbeat event, but also with respectful reflection - one that honours the past while bringing people together in a spirit of hope and community. It's important that we remember what was experienced and the impact it had."

Family memories can be emailed to [clerk@beverley.gov.uk](mailto:clerk@beverley.gov.uk) or posted to **Beverley Town Council, 12 Well Lane, Beverley, East Yorkshire, HU17 9BL**. Please send these by 10th August.

## TOUR DE SALT - THE FINAL STAGE



**Following a hectic few months, clocking up the miles across various stages on the bikes, Tour De Salt looked back on stage 3 and look forward to the final leg.**

Stella commented, "As the team are continuing the Tour de Salt celebrations, (adding £'s to the funds), a big thank you goes to Julian Minshall



of Just Beverley and Shaun Dart of Beverley Chamber of Trade and Flemingate Development for helping us to reach our Stage target of 210km.

It is a great motivational boost when other people get involved, and helps us kick on to hit our goals. Also a big thank you to those who braved the soggy weather and donated to our fundraising for Teenage Cancer Trust, P.A.U.L for Brain Recovery and The Cherry Tree Centre".

The Tour de Salt final leg takes the team from Quarry Bank Mill to Ullswater, a journey of 282km (175 miles), which is going to be some challenge for Team Salt to fit in, so additional help may be required!!

The Tour will be completing the final section, finishing at the Glass Box Gallery in Scarborough on Saturday 16th August 2025.

You can support Tour De Salt fundraising by donating at the office in Beverley or by visiting our Justgiving Page:

[www.justgiving.com/crowdfunding/salt-architects?utm\\_medium=FA&utm\\_source=CL](https://www.justgiving.com/crowdfunding/salt-architects?utm_medium=FA&utm_source=CL)

Thank you to those who have already donated.



# PARKWAY CINEMA - ENTERTAINMENT FOR ALL WHILE SUPPORTING LOCAL BUSINESSES AND THE COMMUNITY



*Parkway Cinema, located in Flemingate Beverley, prides itself on being at the heart of the community, providing entertainment for everyone, supporting local charities and working with local businesses.*

Andrew, General Manager at Parkway commented, "We aim to be more than just a place for entertainment. Parkway brings people together, offering a welcoming space for all ages. By partnering with local suppliers, it strengthens community ties and supports small businesses".

Parkway Cinema supports local businesses having products available for sale, throughout the year they put on special events, celebrate local talent, ensuring the cinema and theatre is a vibrant cultural hub.

This commitment to local partnerships boosts the local economy and creates a unique experience for visitors.

Andrew added, "Parkway Cinema isn't just about films, it's about building connections, supporting neighbours, and enriching community life. We are delighted to have feedback from some of our suppliers.



## Burgess Ice Cream Ltd:

We are very proud and honoured to be able to supply the Parkway Cinema in Beverley with our ice cream pots in many flavours. Burgess Originated in Beverley, so it is great to be able to supply such a well visited local independent cinema which supports local companies such as Burgess Ice Cream Ltd.



## Wold Top Brewery:

We're proud to partner with Parkway Cinema as part of their commitment to supporting local producers. As a Yorkshire brewery rooted within our local community, it's fantastic to see our beers enjoyed by cinema goers in such a well-loved venue. We're grateful to Parkway for giving customers the opportunity to experience great local flavour alongside great films.



## Mr Moo's Yorkshire Dairy Ice Cream:

We have worked closely with Parkway Beverley since it opened in December 2015, opening just in time for the new Star Wars trilogy. We have worked together ever since, helping them through the good and bad.

## Blending Room:

Blending Room has been working with Parkway Beverley since its inception. Building strong, long standing working relationships with venues such as Parkway Beverley is a real privilege.

Many of the faces we see today are from the original cohort from a decade ago - we feel part of the fabric of its history.

Of course, second to maintaining strong relationships with local businesses, providing delicious coffee is also our remit and we hope that we have served both Parkway Beverley and its customers well.

Thanks, Parkway Beverley and here's to the next decade!





## EVERY THURSDAY

(Doors open 9.30am)

Join us for a free brew and enjoy some great films on Beverley Parkway's Big Screen.

Only £5 (or £6 for newer releases) with drink and biscuits included. Aimed at 55s & over.

Films subject to change.

### Thursday 7th August -

#### Fantastic Four (£6)

Starring: Pedro Pascal, Vanessa Kirby, Ebon Moss-Bachrach, Joseph Quinn.

#### The Legend of Ochi (£6)

Starring: Helena Zengel, Willem Dafoe, Emily Watson, Finn Wolfhard.

#### The Naked Gun (£6)

Starring: Liam Neeson, Pamela Anderson, Paul Walter Hauser, Kevin Durand.

### Thursday 14th August -

#### The Legend of Ochi (£6)

Starring: Helena Zengel, Willem Dafoe, Emily Watson, Finn Wolfhard.

#### The Naked Gun (£6)

Starring: Liam Neeson, Pamela Anderson, Paul Walter Hauser, Kevin Durand.

#### Freakier Friday (£6)

Starring: Jamie Lee Curtis, Lindsay Lohan, Julia Butters, Sophia Hammons.

### Thursday 21st August -

#### Freakier Friday (£6)

Starring: Jamie Lee Curtis, Lindsay Lohan, Julia Butters, Sophia Hammons.

#### Materialists (£6)

Starring: Dakota Johnson, Chris Evans, Pedro Pascal, Zoe Winters.

#### Nobody 2 (£6)

Starring: Bob Odenkirk, Connie Nielsen, John Ortiz, RZA, Colin Hanks.

### Thursday 28th August -

#### Materialists (£6)

Starring: Dakota Johnson, Chris Evans, Pedro Pascal, Zoe Winters.

#### The Life Of Chuck (£6)

Starring: Tom Hiddleston, Chiwetel Ejiofor, Karen Gillan, Mia Sara, Carl Lumbly.

#### Nobody 2 (£6)

Starring: Bob Odenkirk, Connie Nielsen, John Ortiz, RZA, Colin Hanks.

*These are the films scheduled to open in August - all are subject to change.  
Check out up-to-date cinema listings at [www.justbeverley.co.uk/cinema-times](http://www.justbeverley.co.uk/cinema-times)*



#### The Naked Gun

From 1st August  
Starring: Liam Neeson, Paul Walter Hauser, Pamela Anderson, Kevin Durand.



#### The Legend of Ochi

From 1st August  
Starring: Helena Zengel, Willem Dafoe, Emily Watson, Finn Wolfhard.



#### Bring Her Back

From 1st August  
Starring: Billy Barratt, Sora Wong, Jonah Wren Phillips, Sally-Anne Upton.



#### Weapons

From 8th August  
Starring: Josh Brolin, Julia Garner, Alden Ehrenreich, Austin Abrams.



#### Freakier Friday

From 8th August  
Starring: Jamie Lee Curtis, Lindsay Lohan, Julia Butters, Sophia Hammons.



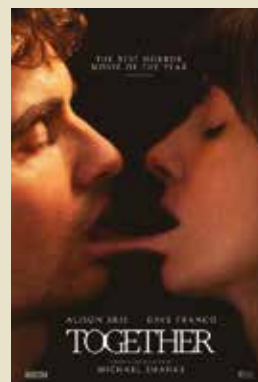
#### Materialists

From 13th August  
Starring: Dakota Johnson, Chris Evans, Pedro Pascal, Zoe Winters.



#### Super Charlie

From 15th August  
Starring: Orlando Wahlsteen, Silas Strand, Sven Björklund, Ulla Skoog.



#### Together

From 15th August  
Starring: Dave Franco, Alison Brie, Damon Herriman.



#### The Life of Chuck

From 20th August  
Starring: Tom Hiddleston, Karen Gillan, Mia Sara, Carl Lumbly.

# YOUR LOCAL INDEPENDENT CINEMA



## JOIN US FOR SOME GREAT FILMS AND BIG SHOWS THIS SUMMER

### THE NAKED GUN

Only one man has the particular set of skills to lead Police Squad and save the world! Lt. Frank Drebin Jr. (Liam Neeson) follows in his father's footsteps in *The Naked Gun*, directed by Akiva Schaffer (*Saturday Night Live*, *Popstar: Never Stop Never Stopping*) and from producer Seth MacFarlane (*Ted*, *Family Guy*). Joining the case are Pamela Anderson and Paul Walter Hauser.

**From 1st August.**



### FREAKIER FRIDAY

Anna Coleman and her mother Tess are in another predicament when they swap bodies with Anna's daughter. Now it's up to the three to reverse the body swap. Starring Jamie Lee Curtis and Lindsay Lohan.

**From 8th August.**



### WEAPONS

From New Line Cinema and Zach Cregger, the wholly original mind behind *Barbarian*, comes a new mystery/thriller: *Weapons*. When all but one child from the same class mysteriously vanish on the same night at exactly the same time, a community is left questioning who or what is behind their disappearance.

**From 8th August.**



### SUPER CHARLIE

Wille has always dreamed of becoming a superhero and fighting crime alongside his policeman father. However, his dream is shattered when his baby brother Charlie is born.

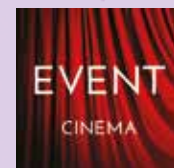
**From 15th August.**



### THE LIFE OF CHUCK

A life-affirming, genre-bending story based on Stephen King's novella about three chapters in the life of an ordinary man named Charles Krantz. Starring Tom Hiddleston, Chiwetel Ejiofor, Karen Gillan, Mia Sara and Mark Hamill.

**From 20th August.**



Event cinema offers something a little different to mainstream films. Live and pre-recorded shows beamed in via satellite from all over the world. Here are the latest live streams that you can enjoy on the big screen at Parkway Beverley.

**Saturday 30th August, 6pm &  
Sunday 31st August, 1pm -**

**André Rieu's 2025 Maastricht Concert:  
Waltz the Night Away! (U)**

Step into a night of music, romance, and celebration with André Rieu's *Waltz the Night Away!* An all-new summer concert captured live from the stunning Vrijthof Square in his beloved hometown of Maastricht is coming to cinemas!

**Thursday 4th September, 7pm -**

**NT Live: Inter Alia**

Oscar-nominated Rosamund Pike (*Gone Girl*, *Saltburn*) is Jessica in the much-anticipated next play from the team behind *Prima Facie*.

**Wednesday 1st October, 6.45pm -**

**RBO: Tosca**

In war-torn Rome, Floria Tosca and Mario Cavaradossi live for each other and for their art. But when Cavaradossi helps an escaped prisoner, the lovers make a deadly enemy.

**Saturday 4th October, 7pm -**

**Radiohead X Nosferatu: A Symphony of Horror**

Silents Synced pairs classic silent movies with epic rock music to bring audiences a unique big screen experience. This reimaging of the iconic *Nosferatu* features Radiohead's *Kid A* and *Amnesiac* albums.

**Tuesday 21st October, 6.45pm -**

**RBO: La Sonnambula**

Following triumphant *Met* turns in *Romeo et Juliette*, *La Traviata*, and *Lucia di Lammermoor*, Nadine Sierra summits another peak of the soprano repertoire as *Amina*.

**Thursday 23rd October, 7pm -**

**NT Live: Mrs. Warren's Profession (12A)**

Five-time Olivier Award winner Imelda Staunton (*The Crown*) joins forces with her real-life daughter Bessie Carter (*Bridgerton*) for the very first time, playing mother and daughter in Bernard Shaw's incendiary moral classic.

**Wednesday 5th November, 7.15pm -**

**RBO: La Fille Mal Gardée**

Lise, the only daughter of Widow Simone, is in love with the young farmer Colas, but her mother has far more ambitious plans for her.

# THE SEVEN-YEAR SPRINT: GIFTING GENEROUSLY WHILE MASTERING INHERITANCE TAX

*Passing on wealth isn't solely about what happens after you're gone. A growing trend, often called "living inheritance," sees individuals choosing to gift significant sums or assets to family during their lifetime.*

It's a proactive and often tax efficient way to transfer wealth, letting you witness the positive impact of gifting in your lifetime but there's a crucial concept to grasp: the "**seven-year gifting rule**" in Inheritance Tax (IHT).

For many, leaving a legacy is important. Recent data shows a substantial majority of UK adults - two-thirds, in fact - value leaving an inheritance. With IHT rules always evolving, gifting during your lifetime is becoming an increasingly attractive strategy. Yet, without understanding the seven-year rule, a gift could still fall within the scope of IHT, potentially leaving beneficiaries with an unexpected tax bill.

## Understanding the Seven-Year Rule

At its core, the seven-year rule dictates that if a substantial gift is made and then pass away within seven years, the gift's value might still be counted as part of your estate for IHT. This means if the estate, including these gifts, goes over the **Nil Rate Band** (the tax-free threshold), beneficiaries could face a tax liability. Essentially, the clock starts ticking the moment the gift is made.

## What Counts as a "Gift"?

HMRC defines a gift broadly but it's more than just cash. Think property, land, listed stocks,

household goods, jewellery, antiques - essentially anything of value that can be given away without getting full market value in return.

These gifts are primarily categorised:

- **Potentially Exempt Transfers (PETs):** These are common for outright gifts between individuals. They're potentially exempt from IHT, becoming fully exempt only if you survive for seven years after making the gift and it's covered by the available Nil Rate Band on death.

- **Chargeable Lifetime Transfers (CLTs):** These are typically gifts made into discretionary trusts. Unlike PETs, CLTs can incur an immediate IHT charge of 20% on any amount over the Nil Rate Band when the gift is made. The world of trusts and CLTs can be complex, so expert financial advice is highly recommended.

## The Tapering Advantage: Taper Relief

The good news is that not all gifts made within the seven-year window are treated equally for IHT. A mechanism called the "**taper relief**" can significantly reduce the IHT rate applied to gifts exceeding the Nil Rate Band if you do survive the full seven years. The longer you live after gifting, the lower the IHT rate becomes:

- **3 to 4 years:** The IHT rate on your gift reduces to **32%**.

- **4 to 5 years:** The IHT rate reduces to **24%**.

- **5 to 6 years:** The IHT rate reduces to **16%**.

- **6 to 7 years:** The IHT rate on your gift reduces to **8%**.

Ultimately, surviving for the full seven years means the gift is entirely IHT-free. This sliding scale offers a clear incentive for early and planned gifting.

## Beyond the Seven-Year Rule: Tax-Free Gifting Allowances

The seven-year rule mainly applies to larger gifts. However, several valuable IHT exemptions allow for tax-free gifting each tax year:

- **Annual Exemption:** You can gift up to **£3,000** each tax year completely tax-free. You can give this to one person or split it. If you don't use your allowance one year, you can carry it forward for one year, effectively allowing a £6,000 gift in the current year.

- **Small Gift Exemption:** Individual gifts of up to **£250** per person per tax year are also tax-free, provided you haven't used another exemption on the same recipient.

- **Gifts to Spouses/Civil Partners:** Any gift to your spouse or civil partner is automatically IHT-exempt.

- **Gifts out of Normal Expenditure:** This exemption is for regular gifts made from your income, provided they don't impact your standard of living.

Using these allowances consistently can significantly reduce your estate's value over time, while boosting your family's financial well-being.

**Strategic Gifting and Professional Guidance**  
Planning your gifting strategy requires careful



NAVIGATION  
WEALTH MANAGEMENT

## Achieve the future you want

**We all imagine our future differently.**

Whatever your goals, we believe there is value in taking advice from someone you trust. We will work with you to plan, grow and protect your financial future.

**Let's start a conversation.**

**Navigation Wealth Management**

01482 379504

navigationwm@sjpp.co.uk

www.navigationwm.co.uk



Navigation Wealth Management Ltd is an Appointed Representative of and represents only St. James's Place Wealth Management plc (which is authorised and regulated by the Financial Conduct Authority) for the purpose of advising solely on the group's wealth management products and services, more details of which are set out on the group's website [www.sjp.co.uk/products](http://www.sjp.co.uk/products). The 'St. James's Place Partnership' and the titles 'Partner' and 'Partner Practice' are marketing terms used to describe St. James's Place representatives.

SJP Approved 10/12/2024



thought about your financial situation and long-term legacy goals.

Professional financial advice is invaluable for navigating the complexities of IHT and ensuring you are gifting in an effective and tax-efficient way. Many find that working with an adviser helps them confidently pass on wealth, making a substantial difference to their family's financial security now and in the future.

While the rules around IHT and gifting can seem intricate, understanding the seven-year rule and using available exemptions empowers you to be more proactive in your estate planning. It's about more than just tax efficiency; it's about shaping your legacy and supporting your family when it truly matters.

**By Matt Hammond, Chief Executive at Navigation Wealth Management.**

Navigation Wealth Management offer a wide range of services from estate planning to investment management. For more information visit [www.navigationwm.co.uk](http://www.navigationwm.co.uk) or speak to a member of the Navigation Wealth Management team on **01482 379504**.

# TC Patisserie

*We* make our own patisseries.

*We* are a French food shop complimenting our own products

*We* make Meals you can reheat at home bought over the counter or pre ordered, via our mailing list or messenger

*We* can cater for any occasion, buffets, dessert tables or full 3 course meals

*We* are open Tuesday-Saturday 9am - 4pm.



10 Lairgate, Beverley, HU17 8EE  
Tel: 01482 860884

# Jadan

Print that gets you noticed

**Jadan Press are a leading family run commercial and trade printer based in Hull.**

**With over 25 years experience, we are renowned for producing exceptionally high quality print, design and finishing.**

**BROCHURES LEAFLETS  
POSTERS CALENDARS PADS  
LARGE FORMAT PRINTING  
STATIONERY MAGAZINES  
SAFETY SIGNAGE BANNERS  
LABELS DIE-CUTTING  
and much much more**



**01482 610902**

[sales@jadan-press.co.uk](mailto:sales@jadan-press.co.uk) [www.jadan-press.co.uk](http://www.jadan-press.co.uk)

Rainbow House, Kimberley Street, Hull, HU3 1HH

jadan\_press jadanpress jadanpress

# PETS ENJOY A HOLIDAY TOO - AT LECONFIELD KENNELS

*When planning a holiday, pet owners often worry about leaving their pets behind. However, locally Leconfield Kennels and Catteries are much more than just a place for pets to stay, they are a Kennels and Cattery that give your pets a holiday as well.*

Nigel and Joanne wanted to design their Kennels and Cattery with the pet in mind providing them with comfort, care, and enrichment. Their facilities have evolved into welcoming retreats that offer a safe, engaging environment tailored to the individual needs of dogs and cats.

At Leconfield Kennels and Cattery, pets are treated to daily routines, playtime, social interaction, and even pampering.

Dogs enjoy outdoor runs, group play (if suited), and one on one time with staff, while cats benefit from quiet, cosy spaces with scratching posts, climbing shelves, external catios and plenty of affection.

Staff at Leconfield Kennels and Cattery are trained professionals who genuinely care about animal well-being.

They get to know each pet's personality, ensuring a calm and reassuring experience. For pets, this means less stress and more fun while their owners are away.



Leaving a beloved pet behind is never easy, (perhaps worse when going on holiday), but knowing they're in a secure, loving, and stimulating environment can bring peace of mind.

In fact, many pets return from their stay at the kennels as relaxed and refreshed as their owners.

Leconfield Kennels and Cattery is like a holiday home for pets, filled with care, companionship, and comfort. A true getaway for the whole family, paws included.

**Leconfield Kennels and Cattery, Arram Road, Leconfield, HU17 7NP.**  
**Office: 07360 276707**  
**Out of hours: 07946 193269**  
[www.leconfieldkennelsandcattery.co.uk](http://www.leconfieldkennelsandcattery.co.uk)

**Please Note - Our drop off and collection times now operate throughout the year.**  
**Drop off: after 2PM**  
**Collection: Before 12 Midday**  
**Unfortunately we will not be able to accept pets outside these times.**

## Four Generations, Giving Over 130 Years Service

Herbert	Eardley	Geoffrey	David
1870-1962	1908-1986	1939-2015	1964



Golden Charter  
Funeral Plans



- Funerals Respectfully Conducted
- 24 Hour Out of Hours Service
- Free Advice & Support
- Private Restrooms
- Prepaid Funeral Plans Available
- Finance Options Available



**Tel: 01482 844695**  
**www.hkempandsonltd.com**

259 Hallgate, Cottingham, East Yorkshire, HU16 4BG  
 Fax: 01482 843898  
 Email: [hkempandsonltd@gmail.com](mailto:hkempandsonltd@gmail.com)



## NORTH LINCOLNSHIRE'S PREMIER AUCTIONEERS AND VALUERS

- Friendly and professional service
- Regular online auctions
- Free auction assessment
- Appraisal and collection service
- Probate valuations
- We can also buy Gold and Silver

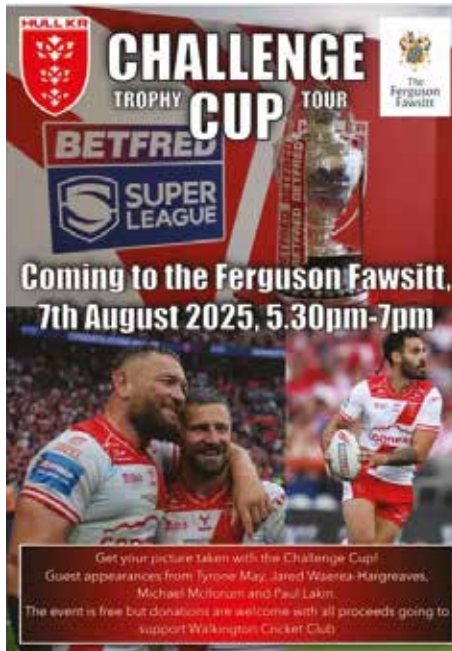
For appointments or inquiries, please reach out to us on **01724 505005** or **07941 352789**.  
 Alternatively visit our website for the latest auctions and news.

**Potters Auction Saleroom LTD Auctioneers and Valuers**  
 The Old School, 42a Northfield Road, Messingham,  
 Scunthorpe DN17 3SA. Tel: 01724 505005  
[paul@pottersauction.co.uk](mailto:paul@pottersauction.co.uk) [www.pottersauction.co.uk](http://www.pottersauction.co.uk)

# BRINGING THE COMMUNITY TOGETHER AT THE FERGUSON FAWSITT

*The Ferguson Fawsitt holds a special place at the heart of community life in Walkington and the East Riding, offering more than just food and drink.*

It serves as a welcoming hub where people from all walks of life can come together. As a Hub, people can build friendship, conversation, and connection.



The Ferguson Fawsitt plays a vital role in entertaining the community, hosting quiz nights, live music, charity events, comedy nights and seasonal celebrations that bring people together and create lasting memories.

Key to the continued growth of The Ferguson Fawsitt, Allen commented, "We look to provide a platform for local performers and businesses, supporting the local economy."

"We have noticed over the years that for many, the pub is a safe and friendly place to combat loneliness and social isolation, supporting local groups allows us to deliver on the needs of the village and further afield".

The Ferguson Fawsitt is a symbol of community spirit, a gathering place that enriches local life in countless meaningful ways.

**DATES FOR YOUR DIARY:**  
**Thursday 7th August - Challenge Cup Trophy Tour - 5.30pm-7pm.**

**Saturday 23rd August - "Stand Up at The Fergie", showtime from 8pm. Time for fun and laughter.**



## The Ferguson Fawsitt



### OPENING HOURS

MON: 12:00-LATE

TUE: 16:30-LATE

WED-SAT: 09:30-LATE

SUN: 12:00-22:00



**WEDNESDAY TO SATURDAY:**  
**AFTERNOON TEA 12PM to 5PM**  
**www.fergusonfawsitt.co.uk**  
**tel: 01482 526317**

**OPEN  
7 DAYS**

### FOOD HOURS

MON:  
12:00-19:30

WED-SAT:  
09:30-20:00

SUN:  
12:00-18:30

# MACE BEARER REQUIRED

**Beverley Town Council is inviting applications for the historic and prestigious role of Mace-Bearer.**

Beverley Town Council are looking for a new mace-bearer following the retirement of Peter Nendick, who has served the Council since 2008 and will be greatly missed.

The Mace-Bearer plays a key role in supporting the Mayor and Civic Party at official engagements, carrying Beverley's ceremonial Mace, ensuring the security and presentation of the regalia, and representing the town at public events and civic functions throughout the year.

"This is a special opportunity for someone to be part of Beverley's rich civic heritage," said Matt Snowden, Town Clerk to Beverley Town Council. "We're looking for someone with dignity, discretion and a real interest in local traditions - someone who can represent the town with pride and professionalism."

The role is accompanied by an annual honorarium of £2,000, paid quarterly, with full training and regalia provided. Membership to the Guild of Mace-Bearers and related expenses will also be covered by the Council.

Applicants must hold a full, clean driving licence, be confident in formal settings, and have the flexibility to attend engagements during evenings and weekends. Use of a personal vehicle is required for transporting the Mayor and Mayoress/Consort to engagements, with mileage costs reimbursed by the Council.

Send your CV with a covering letter explaining why you feel you are the perfect candidate for this unique post, making reference to the following



documents that can be downloaded. A job description and person specification can be found online: [www.beverley.gov.uk/macebearer/](http://www.beverley.gov.uk/macebearer/) Applications can be sent to the Town Clerk by email ([clerk@beverley.gov.uk](mailto:clerk@beverley.gov.uk)) or via post to **Beverley Town Council, 12 Well Lane, Beverley, East Yorkshire, HU17 9BL**. The deadline is 31st August 2025.

## IN THE GARDEN - LEADING THE WAY

**A subject often overlooked in designing a garden is the positioning of paths. They could be described as the skeleton of a garden. The ability to be able to access certain areas is a crucial factor when thinking about the design.**

I was once asked to redesign a garden that although was stunning, the paths had been wrongly placed and there was no encouragement to move or travel through the garden. A few simple changes made a massive difference and now the garden is a joy to walk through. Another thing to consider are the materials that are used.

A brick or gravel path can not only highlight the colours of the plants and the texture of the foliage, but it both delineates the area and visually increases its size. Paths are both decorative and practical, they allow the garden to be divided into different areas which in turn will lead you from one section to the next, perhaps taking you through gates and archways.

There are of course functional paths especially those in vegetable gardens which need to comply

with the width of a wheelbarrow! However, a path is essentially a journey, it is used to allow you to appreciate the garden, the flowers, shrubs and fragrance all stimulate the senses.

The layout should encourage you to be able to move forward never having to retrace your steps. There are many different styles of gardens and subsequently the paths can either be curved as you would find in a cottage garden or a straight path one of a formally designed garden as in the photograph in the bottom right.

A path is often more important than we think, the layout is essential to determine not only the style and the design of the garden but also the connection it will hold to the house.

### The Gardening Calendar

July has been the most up and down month regarding the weather. The temperatures were so high and now we have rain, which is much needed. The hose pipe ban has led me to use the water butts that are connected to the greenhouse and shed. Rainwater is softer and has a lower pH

than tap water which contains both chlorine and calcium. If you have to use tap water, then fill your watering cans in advance and leave them in a semi shaded area and you will find that after a day or two the chlorine will have then evaporated making it a much better formula to water your plants.

Always water at the roots, that way the plant can absorb the water.

One thing I have done for many years if the weather has been dry is to water the area before I put in new plants. After giving the area a few hours to absorb the water I then put the plants in, giving them another good watering after doing so.

Now is the time to tidy Wisteria, taking off any long stems to just two or three buds. This will be in preparation for pruning in January or February the following year. Keep deadheading flowers to encourage more to come, a late autumn bloom is always a pleasure to see.

The tomatoes are now coming into fruit, feed them weekly, and if you have a surplus then freeze them whole. When you defrost them, a rich tomato soup will be on the menu! Likewise with any blueberries which I use to make blueberry muffins, freeze them in batches of 85g (3oz), defrost and then simply add to the mixture.

There is nothing more satisfying than cooking with vegetables and fruit that you have grown.

<https://ordinarygardener.com> - Julie Dowding



*The anticipation of what lies beyond is second to none.*



# I'VE BEEN THINKING... SAYS COLIN RAYNOR

*...as we move in to August about the age old practice of pen pals. I mentioned recently some phrases from years back and pen pals, for some people, might fall into that category.*

My wife went to a school where children were encouraged to write a short letter to another child who they only knew by name. The teachers provided the names of the children and my wife aged eight wrote to a girl called Sally, aged nine, who lived in Michigan in the United States of America.

The contact made with that first letter developed in to a firm friendship that developed over the years as my wife and Sally became adults, married and had children.

We have been to see our friends in Michigan a number of times travelling to various places in that vast country to meet their grown up families. Naturally they have been to this side of the pond, as they call it, and met our children also.



As we have grown older such visits have ceased and the practice of writing letters (or even lengthy emails from Sally) have taken their place. One of the reasons for our friendship developing over the year was the realisation that both families were involved in church life and had a faith based on Christian values. However, I can only put it one way.

Our pen friends in America did not support Barack Obama as their President and do now support the present incumbent of the White House. We are still in touch with the family in Michigan but there is an acceptance on both sides that we see things differently and just leave it at that.

I feel there is a certain degree of sadness on our part. After all, we in the United Kingdom have also had people over the years who have not inspired the country with their leadership.

As I pondered this thought I was fortunate to come across a book with the title "With Love, Joy, Hate and Despair". This book, written at the end of Barack Obama's second term of office gives a glimpse of how the first African / American to inhabit the White House became the first President to interact daily with the ordinary citizens of America. Every day President Obama received ten thousand letters from his fellow American citizens and every night he read ten of them before going to bed.

It seems there has always been a practice of American citizens writing personal letters to their President and this amounted to thousands in a year, but rarely did they receive an answer.

President Obama, during his time in office, requested ten letters each day be passed to him and he would ensure all the letters received a personal handwritten response.



He did not want to read only letters that supported him but also letters that decried his policies.

Letters that showed how some American people were suffering rather than benefiting during his term of office. In this way he claimed that he could begin to see how some of his government's policies were working and others were doing just the opposite.

Naturally he had a dedicated group of people who scrutinised all the letters that arrived at the White House but they all knew what their boss wanted to read. People wrote to Obama out of gratitude, respect and thanks but also in desperation in their darkest times of need, with anger and fear for their future for themselves and their country.

I began by writing of a personal way in which a little girl's letter began a link between two families who live thousands of miles apart. I think this is one of those traditions that must not be allowed to die out and I don't think that the same level of intimacy can be achieved in an email.

I think there is something special in opening a letter from a friend, addressed in their own handwriting, and reading a message that is intended just for you.

LEWIS NORTHERN  
FUNERAL DIRECTORS

MY FAMILY TAKING  
CARE OF YOURS

**Get In Touch**  
1 Lincoln Way, Beverley, HU17 8RH  
info@lewisnorthyfuneraleldirectors.co.uk  
www.lewisnorthyfuneraleldirectors.co.uk  
01482 888 658

Born and raised in **Beverley**, we are proud of the funeral services we offer to our local community.

As a family business we want you to have confidence in us to support you from the first point of contact, throughout and thereafter. The moment your loved one comes into our care they will be treated with care and respect. We offer a comprehensive range of funeral services ensuring you receive the perfect funeral service for your loved ones.

We are available 24 hours a day, 365 days a year, we will guide and support your family throughout.

## My family taking care of yours

Giving the personal touch to funeral services in Beverley and surrounding areas.

Funeral plans, memorial jewellery, available 24/7 365 days a year.

# FREEDOM FROM OVERTHINKING



*It's August already and sunflowers are blooming, fruit is ripening and farmers are bringing in the harvest. We're in the midst of Summer and as temperatures remain high, there are many opportunities to enjoy "God's Own Country" here in Yorkshire, building up reserves of immunity-boosting vitamin D whilst the sun shines.*

Getting out in nature and being part of the community are great ways of maintaining excellent physical and mental wellbeing.

It is over 25 years since I trained in hypnotherapy, and I have continued to add to my bag of tools to align with the ever-changing mental health landscape. My initial training included helping people overcome fears and phobias and letting go of habits such as smoking and overeating.

I added neuro-linguistic programming, enabling me to coach in the business and sporting arenas followed by training in Timeline Therapy™ which gave me a powerful tool to allow clients to let go of anger, sadness, fear and guilt. Whilst chatting with a friend recently, exploring ways she might be able to help her son with autism and ADHD, I checked this out on the internet and found that hypnotherapy and mindfulness can offer benefits for both, which was a revelation to me.

Materially, society has never been wealthier; life expectancy has risen from 35/45 in the 1920s to 72/75 in the 2020's, however, whilst mental health is better understood, modern life stressors including technology use and societal pressures have contributed to a decline in mental wellbeing. In 2022 the World Health Organization acknowledged that depression had increased by 25% during the COVID-19 pandemic.

On a positive note, we can take charge of our emotional wellbeing and incremental changes can bring long-term gains.

## A Small Plan You Can Try This Week

Day	Focus	Action
Monday	Mind	Try 5 minutes of mindful breathing
Tuesday	Body	Walk outside for 20 mins
Wednesday	Connection	Call or message someone you care about
Thursday	Creativity	Draw, write, or create something
Friday	Support	Look into a group, volunteer, or support forum
Saturday	Rest	Reflect, journal gratitude
Sunday	Reconnect	Invite someone for tea, a call, or a walk

Too much time on our hands can cause rumination and listening to the news can increase that sense of powerlessness and overwhelm but making one phone call or text to someone or volunteering for a charity and walking one dog, makes a positive difference in the world and to your own emotional state.

I love this quote from "A Course in Miracle" ... *"Listen in deep silence. Be very still and open your mind ... sink deep into the peace that waits for you beyond the frantic, riotous thought and sights and sounds of this insane world"*. Sometimes, opening the door and listening to the sound of the rain can be a really simple, easy and cost-free way of changing our state of mind.

Of course, if you are feeling overwhelmed in life do call your doctor, a mental health helpline or emergency services if required and remember, seeking help is a sign of strength, not weakness.

Every Tuesday, you can take time out for yourself with the free mindfulness session from 7.15pm to 7.45pm. For more information visit [www.francesdunning.com](http://www.francesdunning.com) or contact me, Fran Dunning on **07973 819867** for details of mindfulness zoom link.

## All About You Hypnotherapy

Helping You Get Peace of Mind in Practical Ways

I've been helping people of all ages increase their levels of confidence and improve their life for over 20 years using hypnotherapy.

I can help you reduce anxiety, get rid of fears and phobias and embed positive habits to increase your levels of health and wellbeing.

Based on Victoria Dock and available face to face or via Zoom globally.

Let me help you to enjoy a new sunrise

### Fran Dunning

Clinical Hypnotherapist & Provider of Mindfulness in the Workplace  
Victoria Dock, Hull  
Mobile: 07973 819867  
e-mail: [info@francesdunning.com](mailto:info@francesdunning.com)  
website: [www.francesdunning.com](http://www.francesdunning.com)

## MR CARPETS

CARPET AND FLOORING SPECIALISTS



TAKE A LOOK AT OUR QUALITY INSTALLATIONS



**37 YEAR**  
ANNIVERSARY  
37 years  
in business  
37 years  
of good, honest service

Check out our  
Facebook and  
Google reviews

**01482 872134**

[f mrcarpetsbeverley](https://www.facebook.com/mrcarpetsbeverley)

E: [mrcarpets@hotmail.co.uk](mailto:mrcarpets@hotmail.co.uk)

3 Beckside North, Beverley, HU17 0PR

# THE JOY OF A BUS PASS

***There are plenty of downsides about getting old, but one fabulous bonus on reaching 66 is you qualify for a free bus pass.***

You can use this all over England, after 9.30am on weekdays and anytime on weekends. As I don't drive, I was eagerly awaiting mine. Luckily, since it arrived the weather has been marvellous, and living very near Beverley's bus station means I've been able to use it frequently.

We actually have a huge range of destinations across the county and beyond that are pretty well served by buses. Most are run by the admirable EYMS, and Stagecoach also now run routes around and out of town. My photos here are all from recent bus trips. Let's take a quick tour.

***Beverly Bus Station***



Regular X46/7 buses serve the lovely village of Bishop Burton, just a 15 minutes ride from town. The wildflower meadow above the green is a real treat, do seek it out. The Altsidora does wonderful food and when using the bus you can enjoy a few alcoholic drinks!

A new direct service, Stagecoach 110, now goes via Kingswood to East Hull and into the city centre along Holderness Road. I used it one hot Saturday in June to visit lovely East Park. On Summer weekends a particular treat awaits you there. A ride on the fabulous heritage water chute, the best value two quid I've spent this year.

Leven is a very useful hub for local bus users as the 24 and 25 services meet there, allowing through trips to the coast at Hornsea, or change to visit the villages east of Hull such as Skirlaugh and Coniston. Leven is a fine place for a stroll with pubs and excellent shops. You can also enjoy the beautiful water lilies on the canal. Of course we also have the stunning national collection of water lilies at Pocklington's Burnby Hall.

My wife and I had a lovely afternoon visit at the start of July, as she is younger she had to pay her bus fare, but the £3 cap on single journeys means this isn't too burdensome. Mention should be made of the Moorsbus service that runs on Sunday mornings from town to Pickering and beyond.

This opens up much of the North York Moors to bus travellers. Being a lover of heritage rail, Pickering has special appeal for me!

Finally, it's straightforward to reach our most spectacular coastal scenery at Flamborough Head by changing buses at Bridlington. So whether you are lucky enough to have a pass, or too young to qualify, do ride our fantastic local buses this Summer. It's good to give the car a rest and do your bit for the environment too. Happy travels!

\*Check EYMS/Stagecoach websites for timetables.  
**Ian Richardson - 10/7/25.**



***The author at Bishop Burton Wildflower Meadow***



***East Park Water Chute***



***Burnby Hall***



***Steam at Pickering***



***Flamborough Head***

# MORE THAN 100 FREE EVENTS - HERITAGE OPEN DAYS - 12TH TO 21ST SEPTEMBER 2025

*There's plenty to do across the East Riding in September and the Beverley and District Civic Society has produced a bumper 44 page programme including venues and events in Beverley, Bridlington, Cottingham, Goole, Hornsea, Howden and Swanland plus other villages in the East Riding, such as Aike, Bishop Burton, Etton, Holme on Spalding Moor, Pocklington, Rudston, Skirlaugh, Whitgift.*

All venues and events are FREE and the brochure has been supported by VEY (Visit East Yorkshire), Beverley Town Council, the Yorkshire Wolds Heritage Trust, the Georgian Society of East Yorkshire and the Beverley Civic Society.

Some familiar locations in Beverley, normally closed to the public, will be open, such as Norwood House, the home of Bostonair; Beverley Friary which was very popular last year; number 2 Highgate, home of Mary Wollstonecraft which was oversubscribed last year.

This year we have added the former Beverley



Savings Bank on Lairgate, and Newbegin House on Newbegin. For those interested in WWII there will be guided tours of the anti-aircraft battery on Butt Farm. Many events have been oversubscribed in the past so it's essential to book ahead, details in the brochure.

If you need a break from visiting venues, pop into the Secret Garden off Minster Moorgate, which will be open on both weekends. Barges on the Beck will once again be offering trips and visits to the recently restored Syntan barge. There are many activities planned at St Mary's church, including a talk on the recent archeological excavations on the north side and a stained glass workshop.

For those wanting to know more about the town there is a short but informative walk along Highgate, led by Colin Bradshaw and a walk led by Ian Richardson highlighting some often overlooked features in the town.

The two churches in Tickton will be open to visitors, together with the churches in Rudston, Holme on Spalding Moor and the Skirlaugh group of seven churches that can be visited by cycle in



one day if you're up for it! Hornsea Civic Society has organised walks around Hornsea, arranged to open Bettison's Folly and the Inshore Rescue station will welcome visitors and explain their activities. Walking tours and talks are planned in Goole and Howden with churches opening to visitors in Goole, Whitgift and Birkin. The brochure also details many events in Bridlington and surrounding villages.

The free brochure giving full details of all these events will be available from local libraries, churches, cafes and hotels from early August. Or you can search the web using this link: [www.heritageopendays.org.uk](http://www.heritageopendays.org.uk) and then search "what's on" for the place you're interested in.



## HERITAGE OPEN DAYS East Riding

Friday 12 - Sunday 21 September 2025

FREE TO  
EXPLORE

Pick up a brochure from tourist information centres, libraries, churches & shops



[heritageopendays.org.uk](http://heritageopendays.org.uk)

## HERITAGE OPEN DAYS 2025

[www.heritageopendays.org.uk](http://www.heritageopendays.org.uk)



### BEVERLEY LOCATIONS AT A GLANCE

Please note this map is a rough guide and does not show exact locations

1 Barges on Beverley Beck	9 Minster Secret Garden	17 Salt Gallery
2 Butt Farm, WWII Battery	10 Beverley High School	18 Church of St John of Beverley
3 Eastgate Print Studio	11 No. 2 Highgate	19 Sun Inn
4 East Riding Theatre	12 Norwood House	20 Toll Gavel United Church
5 Friary	13 St Mary's Church	21 St Martin's Cemetery
6 Guildhall	14 Masonic Hall	22 County Hall
7 Beverley Minster	15 Monks Walk Inn	23 Newbegin House
8 Minster Sanctuary & Herb Garden	16 Queensgate Allotments	24 Golf Club
25 Savings Bank, Lairgate	26 Champney Treasure House	



## BEVERLY ARMED FORCES DAY



# ELECTRICAL TESTING - WHY IT MATTERS WHEN BUYING A HOME

*At Smart Power we've seen a big increase in Electrical Installation Condition Reports (EICRs) recently. This is partly because the rules changed five years ago. Landlords now need to retest their rental properties every five years or when a new tenant moves in. It's kept us busy and for good reason - keeping people safe is always a top priority.*



But here's something not everyone realises. If you're buying a house, there's no legal requirement for the electrics to be tested before you complete the sale. It's often left to the buyer and seller to decide between them and sometimes it just gets skipped altogether. When you think about how much attention gets paid to surveys, damp checks and roofing, it's surprising how often the electrics are overlooked.

The problem is that dodgy or outdated electrics are usually hidden behind walls and under floors. You can't see if a fuse board is ready for modern life or if the cabling is past its best. If you don't test, you could be inheriting a property that needs thousands of pounds of electrical work - and you won't know until it's too late.

That's why we always recommend an electrical inspection before you buy. It gives you a clear picture of what's safe, what's up to standard, and what might need sorting so you can make an informed decision. It's a small step that can save you a lot of hassle and expense in the long run.

We carry out testing for home buyers, landlords, sellers, and letting agents across East Yorkshire. If you're thinking of moving or renting, give us a call. We're always happy to help.

Visit: [www.smartpower.co.uk](http://www.smartpower.co.uk) Email: [info@smartpower.co.uk](mailto:info@smartpower.co.uk)  
Call: **01482 205222**

# IS IT TIME FOR CHANGE, TIME TO MAKE THE MOVE?

*If you are thinking of making a change, require a bigger house or are downsizing; then selling a house in the Summer or Autumn offers great opportunities, but preparation is key.*

Take the opportunity to make the most of the long days, enhance kerb appeal by keeping the garden neat, mowing the lawn, and adding colourful plants for a welcoming first impression.

Use the good weather as an opportunity to clean windows, gutters, and pathways to ensure the exterior looks fresh and appealing.

Inside, declutter rooms to create a bright, spacious feel and add light touches, like carefully placed pottery, fresh flowers and plants.

During viewings, try during the Summer to keep rooms cool and airy; whilst in Autumn, make the home warm and cosy with soft lighting. Ensure any minor repairs are completed, and consider repainting tired areas in neutral tones.

Jayne at Link Agency uses a professional photographer to produce staged, high-quality photos, including drone photography and walk-through videos to showcase your home and make your listing stand out.

Jayne added, "A well-presented home sells faster and can achieve a better price, small changes have a big impact".



## PROFESSIONAL DEDICATED ELECTRICIANS

CALL 01482 205222

Based in Cottingham, serving East Yorkshire with Domestic, Commercial, and Industrial Electrical Solutions.

### OUR SERVICES

- Fault Finding
- Internal and External LED Lighting
- Test and Inspection EICR
- EV Chargers
- Kitchen Electrics
- Consumer Unit Upgrades
- Full and Partial Rewires

SCAN NOW

CONNECT WITH US

Our team will always go the extra mile to ensure that you're delighted with our work.

**WWW.SMARTPOWER.CO.UK**

Jayne at

# linkagency

linkagency

## Sold

01482 699007  
[www.linkagency.co.uk](http://www.linkagency.co.uk)

linkagency

## For Sale

01482 699007  
[www.linkagency.co.uk](http://www.linkagency.co.uk)

## Have you seen these signs?

"I dedicate my time and energy to clients throughout their property selling and buying journey, giving them the comprehensive, professional service they deserve."

01482 699007 (Beverley and Surrounding Villages)  
[www.jayneatlinkagency.co.uk](http://www.jayneatlinkagency.co.uk) | [jayne@linkagency.co.uk](mailto:jayne@linkagency.co.uk)

naea | propertymark

Your dream  
**OUTDOOR**  
**SPACE**  
starts here

**FREE**  
LOCAL  
DELIVERY

**MKM**

[mkm.com](https://mkm.com)



Visit us in branch to explore our wide range of landscaping materials,  
with expert advice to help you choose the right products for your space.

Swinemoor Lane **Beverley** HU17 0JZ **01482 880088**



# WALKING EAST YORKSHIRE FESTIVAL

**Saturday 6th  
to Sunday 14th  
September 2025**

for those who enjoy the great outdoors

This September, the Yorkshire Wolds plays host to the 15th **Walking East Yorkshire Festival** brought together by tourism partners and volunteers across East Yorkshire.

Kicking off the Festival on **Saturday 6th September** is a walk from the award-winning **Laurel Vines Vineyard** at Aike. The 6.5 miles circular walk takes walkers along the banks of the river Hull, Pulfin Bog Nature Reserve, Arram and Dumble Farm with its Highland Cattle before finishing off with a well-deserved afternoon tea.

Our 2025 festival focuses on the **Wold Rangers Way** to compliment a new exhibition at the Champney Treasure House exploring the stories and lives of the Wold Rangers who roamed the **Yorkshire Wolds** looking for food, shelter and occasional work. We invite you to join us to walk in the footsteps of these nomadic folk across a beautiful section of the Yorkshire Wolds starting and finishing in Driffield. The four-day event will cover a circular route of 44 miles. There are also a number of other fabulous walks taking place in the Wolds including circular walks around the rolling hills of Huggate, Warter, Millington, Pocklington and South Cave.

If it's a **coastal walk** your looking for we have two circular walks from Flamborough, affording spectacular views along the heritage coastline passing Flamborough Lighthouse and the drinking dinosaur. Other coastal walks are from Kilnsea to Easington, Hornsea to Mappleton or a dusk walk at **RSPB Bempton** - all taking advantage of the new **King Charles III England Coast Path**.

Guided walks around our stately homes are always popular. A short walk from Snaith takes us to **Carlton Towers** where we are greeted with tea and cake in the

banqueting hall followed by an informative tour. **Wassand Hall** plays host to two events this year, a tour of the Hall and woodland walk or for those feeling a little more energetic we take a 7 miles circular walk passing **Hornsea Mere** and along the **TransPennine trail** before treating ourselves to refreshments back at Wassand.

**Walking the Town Beverley** treat us to a plethora of guided history walks where we become better acquainted with the town's historic routes. From horseracing to shipbuilding, Mary Wollstonecraft to quiet gardens – there is something for everyone. Beverley also hosts it's very first **Beverley Bites** foodies walk in which you have the opportunity to sample at least seven locally produced foods and drinks, whilst soaking up the sights, sounds and tastes of this quintessential, historic market town.

Explore Hull's maritime and cultural history with **Maritime tours** throughout the week or join Paul Schofield to do the renowned Fish Trail across the city centre.

Other festival highlights include the popular **Boots and Beer walk** visiting Wold Top brewery, a **Wild Food Foraging** event, **Nordic Walking** across the Westwood, boat trips on the **Pocklington Canal**, a walk, talk and tasting at **Side Oven Bakery** or a viewing of the **Battle of Stamford Bridge Tapestry**.

If it's a family activity you're looking for we have Geocaching at the **Humber Bridge Country Park**.

**The Ramblers** across East Yorkshire have opened up their walks programme to offer taster sessions for budding recruits, including a walk across the iconic Humber Bridge.



# WALKING EAST YORKSHIRE FESTIVAL



For ladies looking to get back in the saddle, the **Breeze ladies cycling** welcome you to events leaving both Driffield and Beverley. **Hornsea** hold their first history cycle ride visiting interesting historic sites around a number of villages in the area.

**Hedon** host a number of walks and talks around both the waterway's of Hedon haven, country walks and town walks looking at buildings and monuments. Or take advantage of some Heritage Open Days walks in Goole, Etton and Bishop Burton,

From long walks to short walks and experiences not usually open to the public, immerse yourself in the Walking East Yorkshire Festival programme 2025.



Pick up your brochure from Beverley and Bridlington Tourist Information Centres.

Download your guide at  
[www.walkingeastyorkshirefestival.co.uk](http://www.walkingeastyorkshirefestival.co.uk)



# PARKRUN TOURISM: A COMMUNITY ADVENTURE

**parkrun tourism is a growing trend among parkrun enthusiasts, where runners and walkers visit parkrun events beyond their home venue.**

Whether it's a trip across the county or a weekend getaway, or even further afield in another country, parkrun tourism combines fitness, travel, and community in a unique and rewarding way. And whichever parkrun you attend, there is always a running theme of cake!

One of the biggest draws of parkrun tourism is the variety it offers. Each parkrun location has its own character, from city park loops to scenic coastal paths, and historic trails. Beverley Westwood parkrun, for instance, takes participants across open pasture with views of Beverley Minster, and even the occasional cow watching from the sidelines.

For parkrun challenge seekers, a trip to Beverley Westwood also ticks off the elusive "West" in the popular Compass Club challenge, a fun, unofficial goal where parkrunners aim to complete parkruns containing North, South, East, and West in their names. Touring different parkruns also helps individuals build connections across a broader community,



meet like-minded people, and gain fresh motivation. Many tourists enjoy collecting events for challenges like the Alphabeteer (completing a parkrun starting with each letter of the alphabet) or becoming a Cowell Club member by attending 100 different events.



For us at Beverley Westwood parkrun, welcoming parkrun tourists brings many benefits. Visiting runners often bring positive energy and a sense of occasion, boosting the community atmosphere. Increased footfall can help promote local businesses, for instance coffee shops and cafes often see a Saturday morning boost.

Visitors provide exposure for us in running blogs, social media posts, and word-of-mouth recommendations. It also strengthens the volunteer base, as experienced parkrunners often offer to help out while visiting.

Ultimately, parkrun tourism showcases the best of the parkrun spirit: inclusivity, adventure, and a shared love of movement.

Whether you're chasing a compass point or simply exploring new ground, every parkrun visited is a story in the making.

**Louise Barrett.**



## A THANK YOU FROM SHANE

**Shane at Lincoln Way (Stuarts of Driffield), Fish and Chip Shop sends a message of thank you to all the customers for the continued support and custom during the recent road alterations.**

Shane said, "We truly appreciate your patience and loyalty while access to the chip shop was disrupted. Your willingness to navigate the inconvenience means a great deal to us and has helped us keep going through a challenging time. We're proud to serve such a dedicated and understanding community".

On 19th July the South End of Lincoln Way was opened up again accessing to and from Minster Way. Now that the roadworks are coming to completion, we look forward to welcoming you with easier access and the same great food you love.

Final message - "From all of us at the chip shop - thank you for sticking with us!"





# Monks Walk Inn

19 Highgate, Beverley HU17 0DN  
Tel: 01482 880871  
[www.monkswalkinn.com](http://www.monkswalkinn.com)

   
Monks Walk Public House monkswalk

## WELCOME TO ALL OUR CUSTOMERS

- GOOD BEER •
- GOOD COMPANY •
- GOOD CONVERSATION •

- Historic Public House •
- Local Cask Ales • Lagers • Beers • Wines •
- Spirits • Tea • Coffee • Hot Chocolate •
- Large Outdoor Seating Area •
- Tuesday QUIZ • Wednesday FOLK •
- Music - Wednesday Evenings and Sunday Afternoons •
- Pizzas - Wednesday, Friday & Sunday •







**WE LOOK FORWARD TO SERVING YOU!**

# W H Halmshaw Ltd



Our Hull and Beverley showrooms are open  
Monday to Friday 9am-5pm & Saturday 9am-1pm.

Our Hull and Beverley trade counters continue to open Monday to  
Friday 8am-5pm & Saturday 9am-1pm.

Your Local Bathroom Suppliers, Plumbing Merchants & Glass  
Specialists with Showrooms in Hull & Beverley.

**FOLLOW THE DUCK!**

See me on the back of our vans



#followtheduck

tweet us a pic when you spot  
the duck to @whhalmshawltd



**The Showroom is constantly updated to reflect new designs.**

W H Halmshaw Ltd, Inspirations Works, Annie Reed Road, Beverley, HU17 0LF.

**T: 01482 867142 • [www.halmshaws.co.uk](http://www.halmshaws.co.uk)**

# LAIRGATE PROPERTY - PREPARATION IS EVERYTHING

**Over the last few months the Old Pink / Red Savings Bank Building on Lairgate has been undergoing a major transformation, converting it from a single commercial building into two high quality residential homes.**

Richard Stott has many years of experience in bringing new leases of life to old buildings, and this property is no different, the renovation of the building is testament to his vision, ensuring craftsmanship, and attention to detail is at the forefront of every decision.

As people drive down Lairgate, it is evident that what was once a worn, perhaps forgotten old building set back off the road, is now turning into a vibrant, light filled new building, from its rich colour scheme to the front elevation through to a clever and thoughtful approach internally to make full use of the internal spaces, reborn through an experienced eye for design and careful restoration.



The building has maintained its structural integrity whilst the finishing details are bringing the building's character back to life.

Richard commented, "We have kept many of the original elements, preserving and celebrating the high ceilings and large rooms, down to the architraves, doors and ornate cornices. Marrying the past with the ultimate in modern home comforts, including improved insulation to floors and walls, underfloor heating, new plumbing and electrics throughout, with sound system, mood lighting, CCTV, alarm system, electric car charging point and internet wiring throughout".

Richard continued, "We have managed to select finishes that have purpose, lighting that highlights architectural features, and fixtures that balance form with function. Each element is considered,



creating cohesion and elegance throughout the whole of the building".

The Lairgate property will soon be on the market with its new identity, one that respects its history while embracing modern standards of beauty and function, offering two elegant family homes that will respect the past, the present and the future.

Probably the most bespoke, unique, luxurious, high quality homes to come to market in the heart of Beverley in a long time.

It's in the detail where transformation truly takes place.



## Tennants



AUCTIONEERS



Sold for £7,500



Sold for £5,500

FREE VALUATION EVENT  
**Jewellery, Ceramics & Glass,  
Antiques & Collectables**

TUESDAY 12 AUGUST, 11AM-3PM  
ST MARY'S CHURCH, BEVERLEY HU17 8DL

For a free auction estimate, bring your items to the valuation event, and our friendly and knowledgeable specialists will be happy to provide any information or advice you need (no appointment required).

For details please contact Tennants' Harrogate Office  
34 Montpellier Parade, Harrogate, North Yorkshire HG1 2TG  
01423 531661 • harrogate@tennants-ltd.co.uk  
www.tennants.co.uk

Telephone: 01482 869111  
sales@rosesofbeverley.karoo.co.uk



The Kitchen Factory, The Courtyard,  
Tokenspire Business Park, Beverley  
HU17 0TB

Monday to Friday 9am - 5pm | Saturday 9am - 1pm

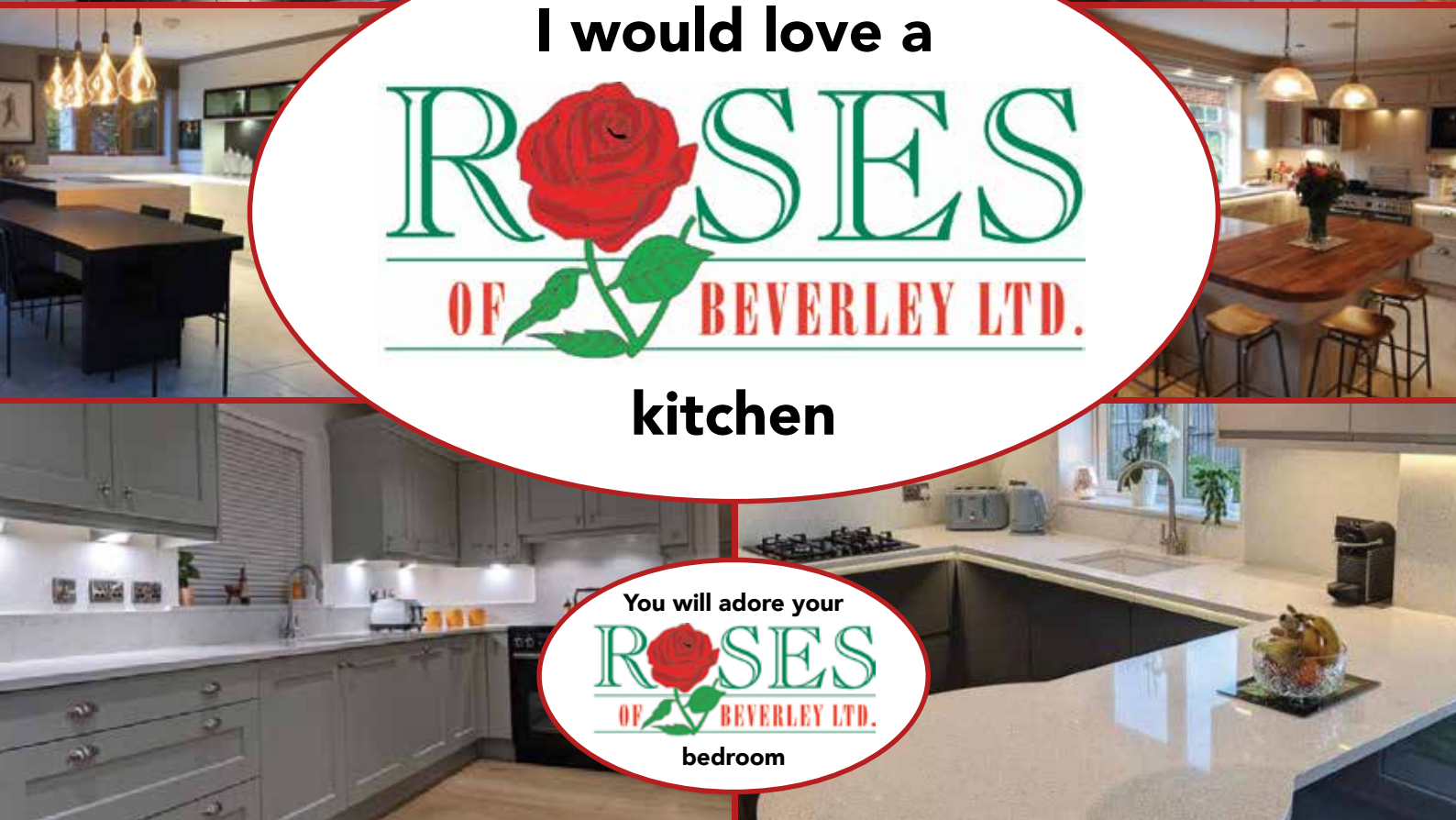
*Roses Kitchens - proud to serve Beverley for the last 25 years*



I would love a



kitchen



**Please call 01482 869111 to book a viewing**

MANY MORE OF OUR CUSTOMERS KITCHENS ON OUR WEBSITE  
5 STAR RATED OVER 100 GOOGLE REVIEWS ★★★★★

Visit **www.roseskitchens.com**  
to see our customers kitchens and read what they have to say about us

**Telephone: 01482 869111**



# FOX MOBILITY - FOR ALL YOUR MOBILITY NEEDS TO ENJOY THE SUMMER

*Summer is a time for sunshine, fresh air, and enjoying the outdoors, but for some individuals with limited mobility, making the most of the season often requires the right support.*

Mobility aids such as scooters, walkers, canes, and wheelchairs can significantly enhance independence and comfort during Summer activities.

Paul commented, "It is worthwhile thinking ahead, whether it's attending garden parties, exploring parks, or traveling on holiday, we have mobility aids that make it easier for you to stay active, connected, and safe".

To get the most out of Summer, it's important to choose the right mobility aid for your lifestyle.

Lightweight walkers and rollators are great for walks or festivals, offering a place to rest when needed. Portable scooters provide extended range and freedom for day trips or vacations.

One important note is to make sure your equipment is in good working order, ensure your scooter is well maintained, check tyres, batteries, and brakes before heading out. (You wouldn't head off on a long car journey without checking you have enough fuel in the tank!).



Accessories can also make a big difference. Cup holders and storage bags add convenience, take a sunshade or a hat for protection during long days outdoors. Staying hydrated and wearing sunscreen is just as vital when you're out and about with a mobility aid.

Anne added, "Ultimately, mobility aids are not just about getting from point A to B, they're tools for living fully. With the right support, summer becomes a season of possibilities, not limitations".

With Fox Mobility behind you, embrace the warmth, enjoy the moment, and move with confidence and have a lovely Summer.



**Fox Mobility: 110-112 Walkergate, Beverley, East Yorkshire, HU17 9BT.**

**Tel: 01482 887799.**

**Email: [info@fox-mobility.co.uk](mailto:info@fox-mobility.co.uk)**

**Website: [www.fox-mobility.co.uk](http://www.fox-mobility.co.uk)**



**Tel: 01482 887799**  
**Email: [info@fox-mobility.co.uk](mailto:info@fox-mobility.co.uk)**

**110-112 Walkergate, Beverley, East Yorkshire HU17 9BT**

- **Stairlifts**
- **Riser Recliner Chairs**
- **Walking Aids**
- **Power Chairs**
- **Scooters and Accessories**
- **Servicing and Repairs for your Mobility Equipment**

**Need advice about mobility equipment? We're here to help!**



# PLANNING A "REFRESH AT HOME"? YOU NEED A HANDYMAN



*When planning a home refresh, many people think of painting walls or buying new decor, but furniture plays a big role in transforming a space.*

Ian commented, "As a Handyman I am often called upon to assemble new furniture, but it is forgotten that I do a lot of work dismantling old or unwanted pieces".

At this time of the year as children move on to big school or away to University, rooms no longer become fit for purpose, quite simply rooms need updating, so it's out with the old, in with the new.

Dismantling furniture isn't always straightforward, some items are large, heavy, or complex, and improper dismantling can lead to damage or at worst injury. Ian, a professional handyman, has all the tools, experience, and know-how to take furniture apart safely and efficiently, thus ensuring it can be reused, recycled, or disposed of properly.

Ian said, "Having the same handyman assemble and dismantle furniture ensures consistency and reduces the chance of parts being lost or damaged. It's also time-saving and convenient for homeowners, allowing for a smoother and more organised refresh process".

Engaging Ian, a handyman for both furniture dismantling and assembly, simplifies the transition, making any home update less stressful and more seamless. It's a small step that can make a big difference in your space.

Ian Harrison - Beverley's Handyman.

**Mobile: 07970 332373**

**Email: [ianharrison68@icloud.com](mailto:ianharrison68@icloud.com)**

**Website: [www.ian-harrison.com](http://www.ian-harrison.com)**





## Ian

# HARRISON HANDYMAN

**For all your jobs around the home**

- Painting, Interior & Exterior
- Mirror & Shelf Installation
- Joinery
- Flat Pack Assembly
- Picture Hanging
- .. and so much more



### 07970 332373

[ianharrison68@icloud.com](mailto:ianharrison68@icloud.com)

[www.ian-harrison.com](http://www.ian-harrison.com)

# HOLIDAYS THAT CAPTURE "COMMUNITY SPIRIT"

*Holidays in the UK and abroad often embody a strong sense of community spirit, bringing people together to celebrate shared traditions, culture, and values.*

In the UK, holidays such as Christmas and Easter are widely celebrated with communal gatherings, festive markets, and charity events. Communities unite through carol singing, Christmas light switch-ons, and local fairs, creating an atmosphere of togetherness.

Bonfire Night is another example where towns host firework displays and bonfires, with neighbours and families gathering to share food, warmth, and stories.



Abroad, many countries celebrate holidays that focus on community and collective joy. For example:

Diwali, the Hindu festival of lights, is celebrated across India and other parts of the world with vibrant street decorations, family feasts, and the sharing of sweets among neighbours.

In Spain, La Tomatina brings entire towns together for playful festivities, while in Mexico, Día de los Muertos (Day of the Dead) encourages families and communities to honour ancestors with colourful altars, music, and parades

and of course junkanoo - in the Bahamas.

UK communities also join in celebrating international holidays like Chinese New Year, which often includes dragon dances, lantern festivals, and community feasts in cities with large Chinese populations, such as London and Manchester. These events encourage cultural understanding and promote unity among diverse groups.

Whether at home or abroad, holidays serve as a reminder of the importance of connection, generosity, and shared joy. They offer opportunities for people to gather, celebrate heritage, and strengthen bonds within their communities.

**Amanda McConnell, Travel Counsellors.**

**Tel: 01482 770540**

**Email: [amanda.mcconnell@travelcounsellors.com](mailto:amanda.mcconnell@travelcounsellors.com)**

**Web: [www.travelcounsellors.com/amanda.mcconnell](http://www.travelcounsellors.com/amanda.mcconnell)**



## RM JOINERY KITCHENS & BEDROOMS

**QUALITY WORKMANSHIP FOR ALL YOUR FITTED FURNITURE NEEDS**

**BESPOKE**



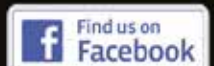
**KITCHENS • BEDROOMS • HOME STUDIES • BATHROOMS**

**Visit Our Showroom: Hull Bridge Road, Tickton HU17 9RT**

**01482 867389**

**FREE HOME  
VISITS & DESIGN  
SERVICE**

**[rm.joinery@yahoo.co.uk](mailto:rm.joinery@yahoo.co.uk) | [www.rmjoinerykitchens.co.uk](http://www.rmjoinerykitchens.co.uk)**



# SSAFA - SMALL CHANGE BIG IMPACT!

**SSAFA, the Armed Forces charity, provides ongoing, life-changing support to veterans, service personnel, and their families.**

For 140 years, SSAFA has stood beside the military community, offering practical, emotional, and financial assistance whenever it's needed.

Their trained volunteers work tirelessly within local communities, providing one-to-one support to those facing challenging times. Whether it's helping a veteran access housing, providing welfare advice, or assisting families with urgent needs, SSAFA ensures no one is left behind.

A small change makes a BIG impact, that change could be you!

SSAFA also run specialist services, such as support for bereaved families and help for serving personnel adjusting to civilian life. Through dedication and compassion, SSAFA continues to make a real difference every day, strengthening communities and honoring the commitment of those who serve their country.

Volunteers are required and you could make the difference - the position of Branch Secretary is a role that needs filling, so contact SSAFA:

Tel: **01964 552 837**

Email: [eyorks.branch@ssafa.org.uk](mailto:eyorks.branch@ssafa.org.uk)

Website: [ssafa.org.uk](http://ssafa.org.uk)



**ssafa** | the  
Armed Forces  
charity

## Your Veterans Need You!

**SSAFA urgently need a Branch Secretary, admin support and caseworkers.**

The Branch Secretary serves as key figures in supporting those who have served their country, ensuring they receive the assistance and resources when in need after protecting our country.

It's a role that requires dedication, compassion, and a commitment to serving others, offering immense personal satisfaction and the opportunity to positively impact the community.



**If you think you can help, please get in touch:**

**Tel: 01964 552 837**

**Email: [eyorks.branch@ssafa.org.uk](mailto:eyorks.branch@ssafa.org.uk)**

**Website: [ssafa.org.uk](http://ssafa.org.uk)**



## Show home **NOW OPEN** at **The Paddocks in Beverley**

A stunning collection of 2, 3 & 4 bedroom homes



Scan to view  
homes available

  
**THE PADDOCKS**  
— BEVERLEY —

**LOVELL**  
HOMES

# IN THE PICTURE WITH JOSH

*At this time of year, I like to get out and look a bit closer into the undergrowth as there's such a variety of wildlife to see, I usually find something I've never seen before.*

Like this Vapourer Moth Caterpillar I recently found in the garden, a fairly common species but I'd never seen one before. With its unique arrangement of hairs and bristles, it looked almost alien as it crawls across the foliage.



If you want to photograph insects yourself there's a few things to keep in mind. If you have a macro lens, that will work best because you'll be able to get much closer. You ideally want to use quite a high aperture, because the closer you get, the narrower the depth of field will be. This means it's very easy to get out of focus shots, especially if the insects are flying or sat on a flower that's waving about in the wind.

If you have a subject that's stationary then a tripod might be useful, but usually handheld is the way to go but you'll have to have a bit of patience to get the shot.

Using techniques like focus stacking can help but honestly, I prefer a one shot approach.



Using a flash gun or ring flash can help with lighting and allow you to turn your aperture up fully, but even with all that, you'll still find cool looking insects that are so tiny you can't get a good photo.

So get out and forage around the undergrowth to find some insects to photograph. You can find more information about my work and full portfolios on my website and my social media pages and if you have any questions don't hesitate to get in touch.

Instagram: [@joshharrison.photography](https://www.instagram.com/joshharrison.photography)  
Facebook: [@JoshHarrisonPhotography](https://www.facebook.com/JoshHarrisonPhotography)  
Web: [www.joshharrisonphotography.com](http://www.joshharrisonphotography.com)  
Email: [info@joshharrisonmedia.com](mailto:info@joshharrisonmedia.com)



## DON'T MOVE, IMPROVE!

One-third of homeowners are prioritising home improvements in 2025 and making significant cost savings.  
It's time to improve your home with Cherry Group



- UPVC Windows and Doors
- Sliding Sash Windows
- Aluminium Windows, Bi-folds and Sliding Doors
- UPVC & Composite Cladding



- Modular Extensions & Orangeries
- Conservatories
- Conservatory Warm Roof Replacements
- Garden Rooms

**VISIT OUR SHOWROOM: Unit 2, Beck View Road, Beverley, HU17 0JT**



GET IN TOUCH  
01482 770621  
[www.cherrygroup.uk](http://www.cherrygroup.uk)



## WORDSEARCH

E B X P Z N N J P R L A Y I F  
P R O O Q L E V A G L L O T L  
G H T D Z S M B Y X L G F B E  
S X L A A Z H E R E T S N I M  
S Y V U E T N A M Z X V M B I  
O N E C R H P N G O K G E T N  
R C F O R L T M P A R W P T G  
C E N Y C A U E I M L I G P A  
T X C O R O N A T I O N A S T  
E M E I T E S E C X V W T L E  
K K O A C I L E P E M M K B L  
R Q I I D M I L C K A A R D R  
A Q B Z L Y H M A R I J C D P  
M L J W G W Q M Y G X Y W T W  
N I A B L O C S C D L I C G G

CORONATION  
FLEMINGATE  
GALLERY  
MARKETCROSS  
MEMORIAL

MINSTER  
NORTHBAR  
STMARYS  
THEATRE  
TOLLGAVEL



Where are the Ducks?  
Answer on Page 38.

## QUOTE OF THE MONTH

August, the bridge between  
Summer and Autumn

## WHERE IN BEVERLEY?

Where in Beverley can you  
find this landmark?  
Answer on Page 38.



## WHAT IS IT?

Can you work out what this  
obscure image is?  
Answer on Page 38.



## COMEDY CORNER

Can a frog jump higher than a house?  
Yes, a house cannot jump.



What do you call a sad strawberry?  
A blueberry.

What has a head, a tail, but no body?  
A coin.

How do trees access the internet?  
They log on.

I wondered why the Tennis Ball was getting closer and closer...  
Then it hit me.

What happens when ice cream gets angry?  
It has a meltdown.

**DREAM DOORS®**  
NEW LIFE FOR OLD KITCHENS

**BRING NEW LIFE  
TO YOUR KITCHEN  
THIS SUMMER**

Get Holiday - Ready for Less: Save up to 50% vs a Full New Kitchen

Proudly transforming kitchens across the East Riding of Yorkshire

01482 861653

SWINEMOOR LANE, BEVERLEY HU17 0LN

WilliamHILL

# Beverley Bullet

SATURDAY  
30<sup>th</sup> August



Scan me



Get your tickets at

[beverley-racecourse.co.uk](http://beverley-racecourse.co.uk)



## Botterill & Co

Chartered Certified Accountants

We are a modern and professional accountancy practice ideally located to serve businesses in Beverley and the surrounding area.

We utilise modern accounting technology to provide you with a cost effective, professional service.

### Our services:

- Annual Accounts
- Tax Planning
- Management Accounts
- Tax Returns
- Company Formations
- Payroll
- Cloud Accounting
- Bookkeeping & VAT

For a free initial consultation please contact us:

Office: 01482 862240

Email: [gareth@botterillco.co.uk](mailto:gareth@botterillco.co.uk)

Website: [www.botterillco.co.uk](http://www.botterillco.co.uk)

1st Floor Offices, 40 Norwood, Beverley, HU17 9EY.



## There's never been a better time to visit Beverley & ER Golf Club



Now is the perfect time to discover the beauty of our award-winning 18-hole course, renowned for its excellence throughout the year, but especially in the spring.

Visit the fully-stocked Pro Shop for all your golfing needs, and take advantage of lessons with our new Head Pro Theo Blake, or book the state-of-the-art indoor golf studio.

Our restaurant and bar is under new management, and is open to golfers and non-golfers alike.

So if you're a visitor or looking to become a member, Beverley & ER Golf Club is here for you.

To find out more, just call 01482 868757

# WILSONS WHEELS - HELPING YOU GO FURTHER TO EXPLORE

Exploring and cycling offer fantastic benefits for both physical and mental health.

Nathan commented, "Regular cycling improves cardiovascular fitness, strengthens muscles, and helps maintain a healthy weight. It's a low-impact activity, making it suitable for people of all ages and fitness levels".

It is well known that beyond physical gains, cycling outdoors reduces stress, boosts mood, and enhances mental well-being through fresh air and connection with nature. Exploring new areas by bike also stimulates the mind, providing a sense of adventure and accomplishment. Whether commuting, enjoying countryside rides, or discovering hidden gems locally, cycling promotes a healthier, happier lifestyle while encouraging sustainable, active travel habits.

If you want to explore more - Wilsons Wheels will help you get those wheels turning.







Pop in store  
to see the new  
2025 bike range

## WILSONS WHEELS

T: 01482 882881

W: [www.wilsonswheels.co.uk](http://www.wilsonswheels.co.uk) E: [info@wilsonswheels.co.uk](mailto:info@wilsonswheels.co.uk)

- Adult Bikes
- Children's Bikes
- Electric Bikes
- Clothing for all cycling weather
- Parts and accessories

89a Grovehill Road, Beverley, East Yorkshire HU17 0EJ

**NOW OPEN:** Monday - Friday 8.30am - 5.30pm

Saturday 9am - 5pm    Sunday: CLOSED - Out riding our bikes

## THE WINDOW SEAT BY FRED ELWELL

*Ian Peters, sent in this picture of his mother, Janice Llewellyn Peters - she is the young girl in the picture.*

There are two versions of her, one with platts, one with long hair and she is seated either side of her mother, Sarah Kate Hobson, the wife of Neville Hobson of Beverley.

A delightful study of two views of Jan Peters, with her mother, Sarah Kate (Moye) Hobson. It was painted by Fred Elwell in the Drawing Room of his North Bar House in 1932.

Jan would have been 103 on 18th July when this picture was taken. With her eldest son, Ian Peters. The picture is on display until the end of September.



Spend your August Bank Holiday at our

## Yoga & Floating Sound Bath

Pam, Amy and Jess guide you through a luxurious  
Yoga & Floating Sound Bath Retreat

**Gentle yoga | breath work | guided meditation |  
mindfulness nature reserve walk (weather permitting)  
| indulgent sound bath on our heated pool**

*\*lunch & refreshments are included\**




£55

**Sunday 24th August**  
10:30am - 2pm  
Sportsability Yoga & Pilates Studio  
Sequoia, Ings Lane, Dunswell, HU6 0AL

SCAN TO BOOK



# WHAT'S ON IN BEVERLEY

Tell us about your event!

E-mail [info@justbeverley.co.uk](mailto:info@justbeverley.co.uk)

Telephone **01482 679947**

For more events visit  
[justbeverley.co.uk/pages/news](http://justbeverley.co.uk/pages/news)

## Saturday's in August

### Beverley Bites

A history walking tour with a foodie twist.  
[www.beverleybites.com](http://www.beverleybites.com)

## Until 30th August

### Brick History Exhibition

A captivating journey through 13.8 billion years of world history, creatively brought to life using LEGO® bricks. Beverley Art Gallery, First Floor of Champney Treasure House, Champney Road.

## Until 31st August

### A Mischief of Rats - Find A Rat

45 beautiful, artist decorated giant Rat sculptures across the area! [www.amischiefofrats.co.uk](http://www.amischiefofrats.co.uk)

## Until 4th October

### Living Up Lanes: Stories of the Wold Rangers

Champney Treasure House, Champney Road, Beverley, HU17 8HE.

## Friday 1st August

### Movie Musicals

Bottomless Party, Beverley Hills Diner, 8pm.

## Saturday 2nd August

### Trash to Treasure Table Top Sale

9.30am to 12.30pm. Toll Gavel Church Driveway. Please pop along to the sale if you can and see what 'treasure' you might find.

## Thursday 7th August

### Iago Banet, 'The Galician King of the Acoustic Guitar

Iago, a virtuoso Spanish guitarist based in the UK, is currently touring his third album. East Riding Theatre from 7.30pm.

### Elsa and Anna Brunch

Tea Party and Meet & Greet, Beverley Hills Diner, 9am.

## Friday 8th August

### Mamma Mia!

Bottomless Party, Beverley Hills Diner, 8pm.

## Monday 11th August

### Norwood Nites Community Cinema

Doors open at 6.30pm for refreshments and chat and film to start at 7pm. Due to copyright we are not able to advertise the film title apart from on the premises. A chance to see a film again or for the first time and make new friends. Free Admission. The films are shown in the hall at the back of the church. Films are shown the 2nd Monday of every month. To keep updated about future programme please ring 07903 136996 & find us on: Facebook Norwood Methodist Church, Beverley & our website: [norwoodmethodist.org.uk](http://norwoodmethodist.org.uk)

Film Synopsis: An 1942 American romantic drama film directed by Michael Curtiz and starring Humphrey Bogart, Ingrid Bergman, and Paul Henreid. Filmed and set during World War II, it focuses on an American expatriate (Bogart) who must choose between his love for a woman (Bergman) and helping her husband (Henreid), a Czechoslovak resistance leader, escape from the Vichy-controlled city of Casablanca to continue his fight against the Nazis.

## Tuesday 12th August

### Tennants Valuation Event

11am - 3pm, St Mary's Church.

## Thursday 14th August

### Barbie Brunch

Tea Party and Meet & Greet, Beverley Hills Diner, 9am.

## Friday 15th August

### Community Concert to Commemorate the 80th Anniversary of VJ Day

From 7pm, St Mary's Church. The concert will feature performances from Beverley Church Lads and Girls Brigade, Beverley Male Voice Choir, and will include readings of wartime memories and moments of reflection.

### Taylor Swift vs Sabrina Carpenter Tribute

Food and Bottomless Soda, Beverley Hills Diner, 5pm.



### Taylor Swift vs Sabrina Carpenter Tribute

18+ Party, Beverley Hills Diner, 8pm.

## Saturday 16th August

### Beverley Pride 25

Main Event - 12-6pm, Flemingate. Pride after-party, 6pm til late at Firepit. Free Event. Stalls, Workshops, Family Areas.

## Thursday 21st August

### Little Mermaid Brunch

Tea Party and Meet & Greet, Beverley Hills Diner, 9am.

## Friday 22nd August

### Gary Barlow Tribute

Bottomless Party, Beverley Hills Diner, 8pm.

## Saturday 23rd August - Friday 19th September

### My Home Patch, Exhibition by Susan Beaulah

Launch on 23rd August 12-2pm. Then open Tuesday to Saturday 10am to 2pm, East Riding Theatre, cafe area, 10 Lord Roberts Road, Beverley HU17 9BE. [www.susanbeulah.com](http://www.susanbeulah.com) Instagram: @susanbeulah

## Sunday 24th August

### Country Music!

Bottomless Party, Beverley Hills Diner, 3pm & 8pm.

## Monday 25th August

### Disney Princess Brunch

Tea Party, Meet & Greet, and Singalong, Beverley Hills Diner, 11am  
**Adult Disney Brunch**  
Bottomless Brunch, Beverley Hills Diner, 2pm.

## Thursday 28th August

### Rapunzel Brunch

Tea Party and Meet & Greet, Beverley Hills Diner, 9am.

## Friday 29th August

### Greatest Showman vs Lion King!

Food and Bottomless Soda, Beverley Hills Diner, 5pm.

### Greatest Showman vs Lion King!

18+ Party, Beverley Hills Diner, 8pm.

## Sunday 31st August

### Commonwealth War Graves

Discover the stories of the service men and women who sacrificed their lives in the two world wars and are commemorated in our local area. St Mary's Church Cemetery, Beverley, at 11am.

## Friday 12th - Sunday 21st September

### Heritage Open Days East Riding

With more than 100 free events. Some familiar locations in Beverley, normally closed to the public, will be open. For more information, visit the website: [www.heritageopendays.org.uk](http://www.heritageopendays.org.uk) and then search "what's on" for the place you're interested in.

## WHAT IS IT ANSWER

Grille on a classic car



## WHERE IN BEVERLEY ANSWER

The Brick History Exhibition



## FIND THE DUCKS ANSWER

You should have found those ducks on the Halmshaw advert on Page 27.

# PLAYLAB AT ERT THIS AUGUST

**Playlab is a new writing initiative at ert where they are focusing on local writers' new work, showcasing it in script-in-hand performances over two evenings. ert are also running a writing workshop for people to book onto to boost their playwriting skills.**

Get in touch and enjoy what inspires!! the writers at Playlab (Richard Vergette, Gill Adams, Louise Beech and Alison Shaw) and their plays.

We asked a simple question to the Playlab writers - Who is their favourite famous person and what question would they ask?

## Richard Vergette:

I don't really have a favourite famous person as such, but I was lucky enough to see Giant recently and John Lithgow's extraordinary performance as Roald Dahl. I'd like to ask Mr Lithgow how he prepared for the role and what feelings the experience has left him with about the famous author.

I wondered how challenging it must have been to portray Dahl's shocking antisemitism but also his compassion for children and undoubtedly huge intelligence. My wife also wants to know if it was him on the same flight as us to New York last November. She's convinced it was!

## Gill Adams:

I'd like to have met Nikola Tesla because he believed he received signals that might be from an extraterrestrial source. He spoke of strange electrical disturbances he detected in 1899,

which he initially believed could be from Mars. While he acknowledged the possibility of these signals being from another planet, he also considered other explanations like natural phenomena or Earth-based interference.

I'd ask him if he believed that one day we will know for sure that we are not alone! I'd also be fascinated to hear his thoughts about time travel!

## Louise Beech:

I'd love to have a conversation with my lifelong, since childhood idol, Marilyn Monroe. I'd invite her to sit with me on my garden bench by the 'red robin' trees, and I'd offer her a glass of her favourite champagne.

And when she was relaxed, and we'd become the best of friends, I'd ask, 'Marilyn, what happened that night?' Her myth, legend, however you want to describe it, is part speculation about her death.

Knowing the truth, I feel, would let the memory of her blossom even more; it would let her kindness, beauty and survival of a tough childhood

be the reason we remember her.

## Alison Shaw:

I think the funniest TV sketch I've ever seen is still Two Soups by Victoria Wood and Julie Walters - it's 40 years old but it still cracks me up. I love their brilliant writing and comic-genius level performances. My writing has been significantly influenced by Victoria Wood, Caroline Ahern, Sally Wainwright and Laura Wade.

I admire their playful comedic style that draws you in and makes you fall in love with their characters, yet they possess the skill to challenge an audience by subverting expectations and surprising you with something beautifully heartbreaking.

Given that 'Everyone Hates Rod Stewart' fits squarely within the comedy-drama genre, if I could ask them one question, it would be...do they fancy writing the next draft for me?



14<sup>TH</sup> AND 15<sup>TH</sup> AUGUST  
**PLAYLAB**  
£10.00 A TICKET  
CAFÉ BAR OPEN 6.10PM | DOORS OPEN 6.40PM | SHOW STARTS 7.00PM  
**WRITING WORKSHOP**  
£20.00 WITH ACCESS TO THE THURSDAY SHOW  
3.00PM - 5.00PM WITH RICHARD VERGETTE



# SUMMER

OF GREAT ENTERTAINMENT

**THEATRE**



**3<sup>rd</sup> September, 19:00**  
**£14.00 - £10.00**

**THEATRE**



**14<sup>th</sup> / 15<sup>th</sup> August, 19:00**  
**£10.00**

**MUSIC**



**30<sup>th</sup> August, 19:30**  
**£20.00**

**Box Office** - Tel: 01482 874050 Email: [boxoffice@eastridingtheatre.co.uk](mailto:boxoffice@eastridingtheatre.co.uk) **Or Book Online** - [www.eastridingtheatre.co.uk](http://www.eastridingtheatre.co.uk)

FLEMINGATE  
BEVERLEY

FASHION | FOOD | FILM | FUN

# Summer FUN 2025

PLUS, LOOK  
OUT FOR OUR

## DUCK DETECTIVE HUNT



### FUN AT THE BEACH

Wednesday 23<sup>rd</sup> July  
to Sunday 3<sup>rd</sup> August

Jump into the large sandpit with our buckets and spades. Build the ultimate sandcastle! Enjoy fun children rides with Funfair & Candyfloss\*\*

10am - 4:30pm daily\*

Tuesday 22<sup>nd</sup> July

Enjoy FREE crazy golf throughout the day on the grassed area!

10am - 3:00pm

### FREE CRAZY GOLF FUN

### MAGIC CARPET'S FUN SHOW

Wednesday 6<sup>th</sup> August

With magic, juggling, and laughs, this interactive show stars Jon and multi-talented Will guaranteed to delight the whole family.

10am - 10:30am, 11:30am - 12pm,  
1:30pm - 2pm & 3pm - 3:30pm

Wednesday 13<sup>th</sup> August

Ever dreamt of running away to join the circus? Now's your chance! Try juggling, unicycling, tightrope, plate spinning, diabolo, and more!

10am - 3pm

### CIRCUS AVAGO

### MICHAEL DIAMOND'S MAGIC SHOW

Monday 18<sup>th</sup> August

Fun, laughter, and amazement await as Michael brings his magic to Flemingate. Every show is unique and packed with audience participation!

10am - 10:30am, 11:30am - 12pm,  
1pm - 1:30pm & 2:30pm - 3pm

Monday 18<sup>th</sup> August

Watch out for him standing head and shoulders high on his stilts. Will is a brilliant juggler and balloon twister.

10am - 3pm

### WHACKY WILL

### JEDDY BEAR AND GARY LIVE

Wednesday 20<sup>th</sup> August

Pie flinging summer madness from this Multi-award nominated comedy duo! Expect games, dance offs, world record attempts and lots of fun!

10am - 10:30am, 11:30am - 12pm,  
1pm - 1:30pm & 2:30pm - 3pm

Wednesday 27<sup>th</sup> August

Meet our friendly baby farm animals heading to Flemingate for a fun day out thanks to the team at The Purple Pig Company.

11am - 3pm

### SUMMER ON THE FARM

Summer  
of Fun



FLEMINGATE.CO.UK

